

PLAT AND RECORD

Of a Survey on Section 35 T 4 R 10 E. of the 4 P. M. in Union Township

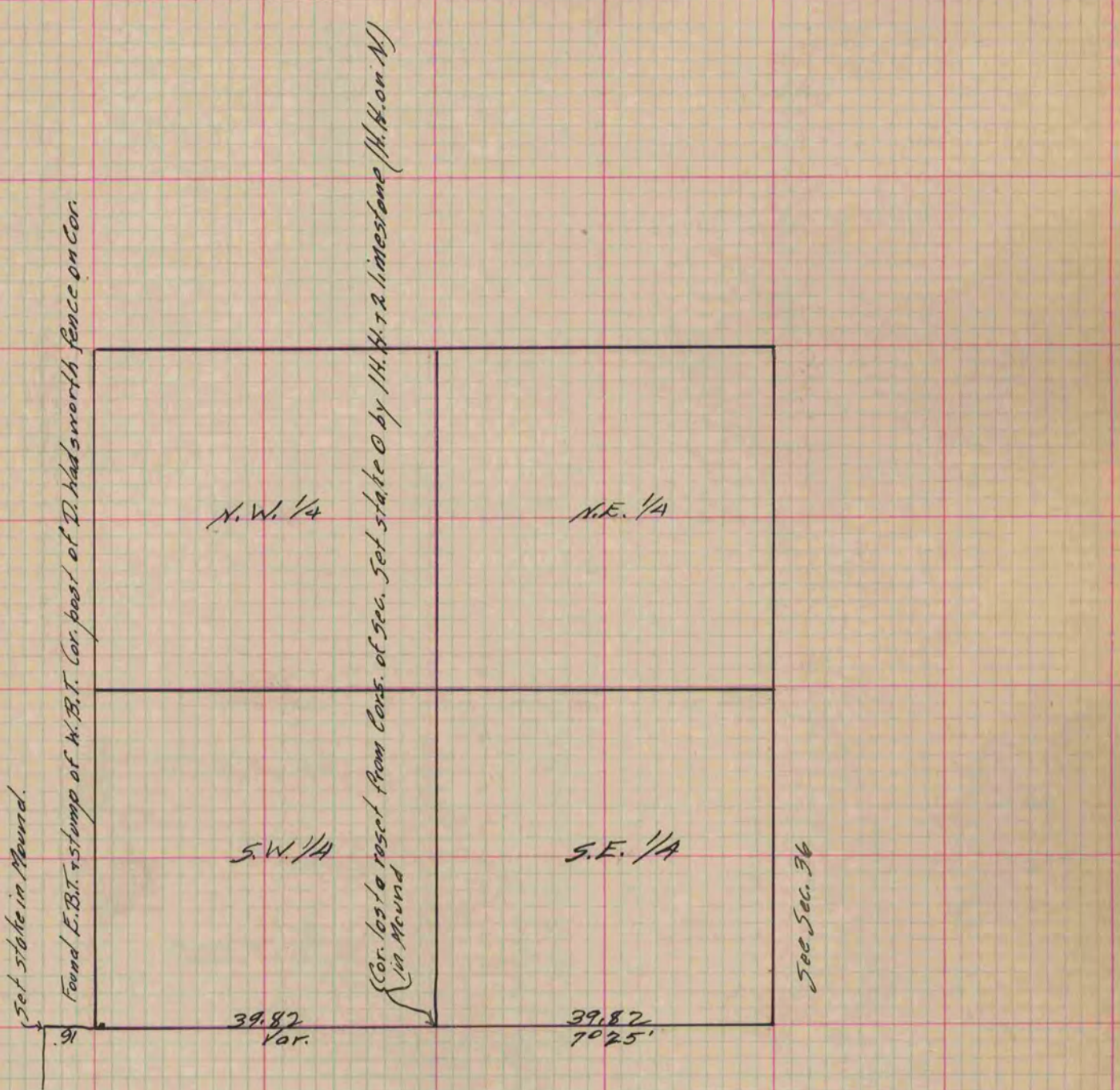
Rock County, Wisconsin, made November the 14 1867

I hereby certify that the following is a correct record of said survey as made by me.

COUNTY BUILDING
IN CITY OF BELOIT

(Signed) S.D. Locke
S.D.L.

County Surveyor.



Copied from Page 256 Vol. 1. Original County Surveyor's Record.