

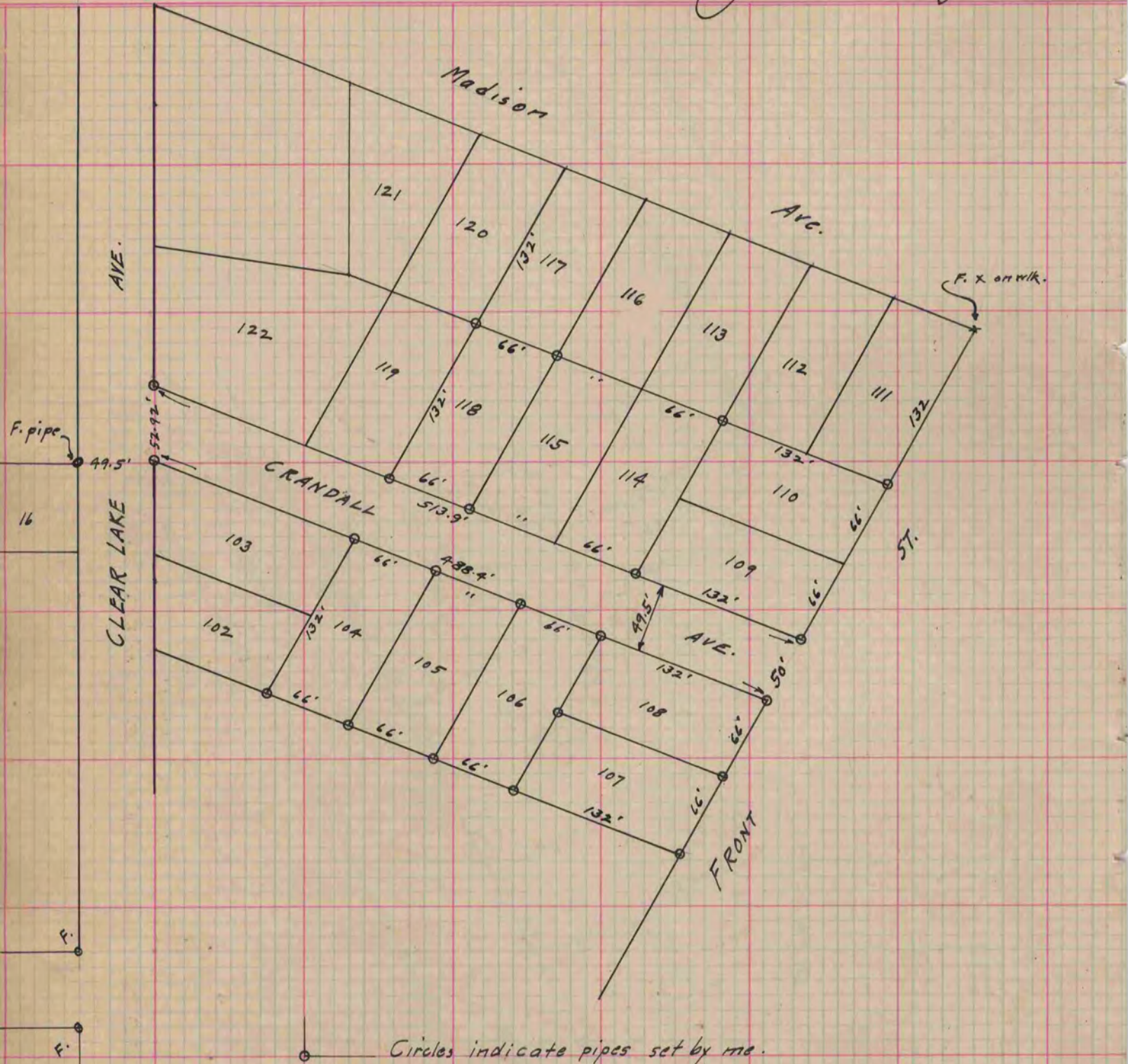
# PLAT AND RECORD

Of a Survey on <sup>N.E. 1/4</sup> Section 28 T4N. R13 E. of the 4 P. M. in Milton Township  
Rock County, Wisconsin, made Sept. the 1936.

I hereby certify that the following is a correct record of said survey as made by me.

COUNTY BUILDING  
IN CITY OF BELOIT

*B. Bunny*  
County Surveyor.



Circles indicate pipes set by me.