

PLAT AND RECORD

Of a Survey on Section 35 T 1 R 11 E. of the 4 P. M. in Newark Township

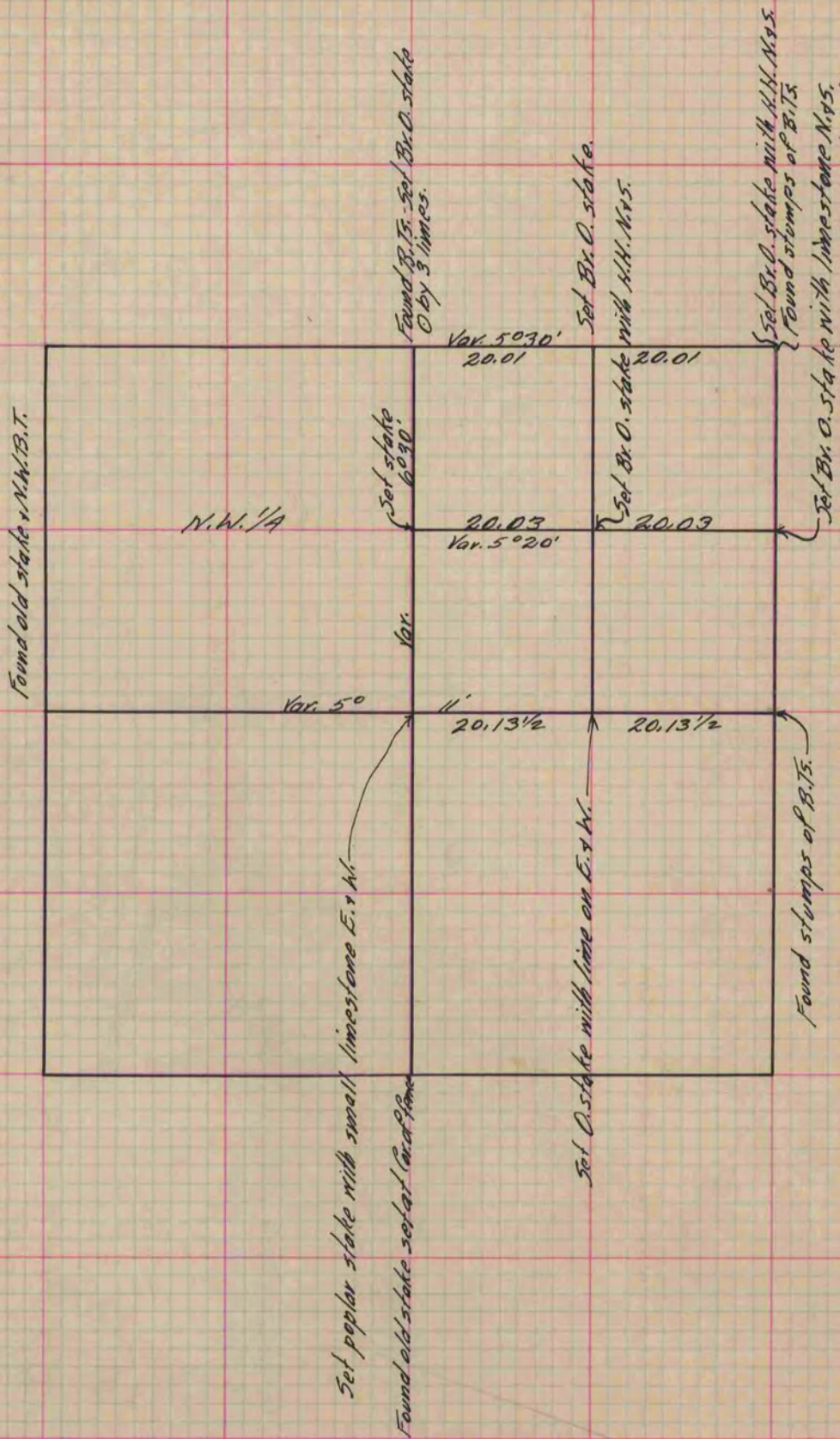
Rock County, Wisconsin, made April the 5th + 6th 1869

I hereby certify that the following is a correct record of said survey as made by me.

COUNTY BUILDING
IN CITY OF BELOIT

(Signed) R. K. Lee
RKL

County Surveyor.



Copied from P. 277 Vol. 1 County Surveyor's Record.