

# PLAT AND RECORD

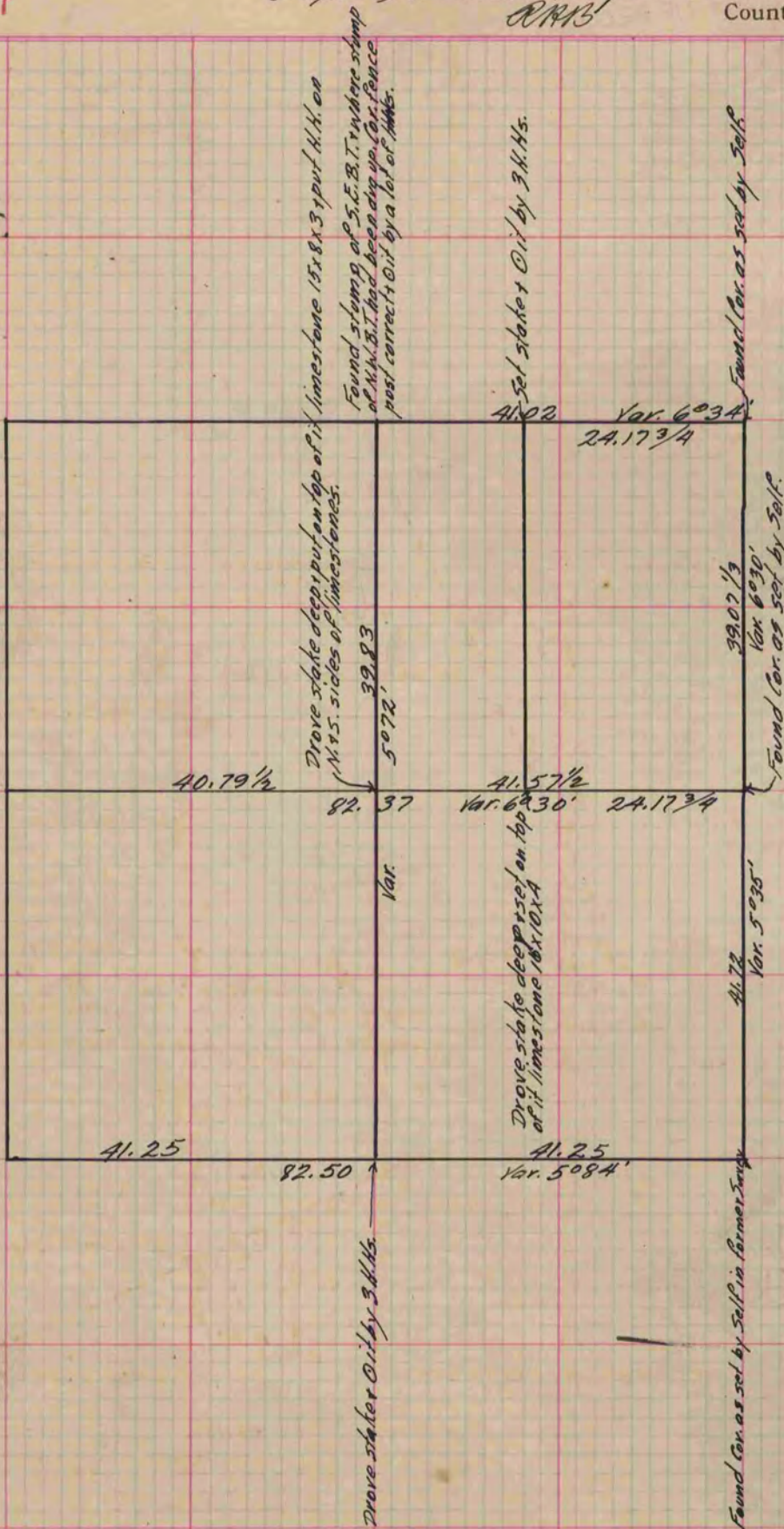
Of a Survey on Section 11 T A R 11 E. of the 4 P. M. in Porter Township  
 Rock County, Wisconsin, made August the 27 1886

I hereby certify that the following is a correct record of said survey as made by me.

**COUNTY BUILDING  
 IN CITY OF БЕЛОИТ**

*(Signed) Edward Ruger*  
 ERS

County Surveyor.



Copied from P. 234 Vol. 2 County Surveyor's Record.