

PLAT AND RECORD

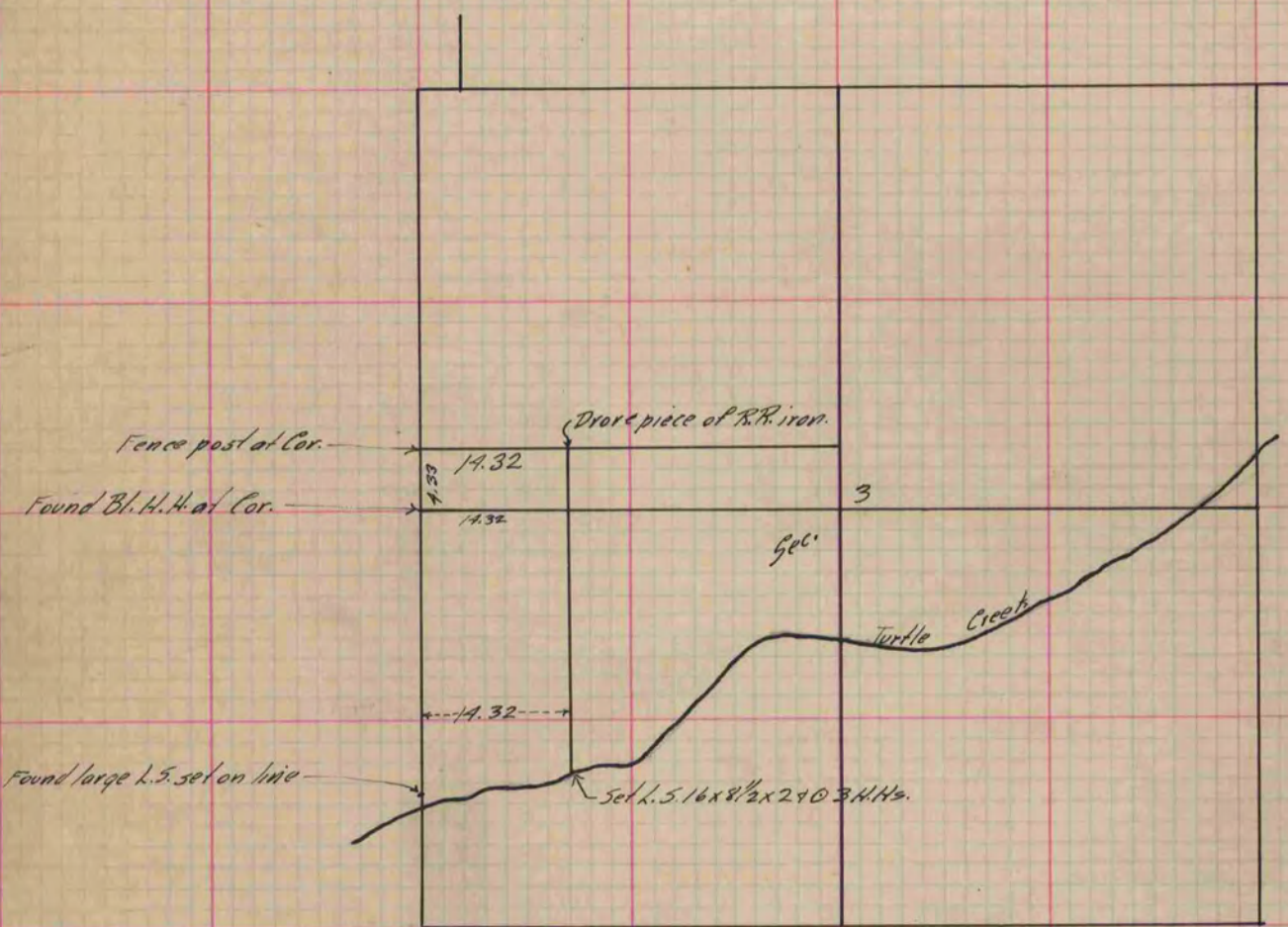
Of a Survey on Section 3 T 1 R 13 E. of the 4 P. M. in Turtle Township

Rock County, Wisconsin, made Nov. the 23rd 1891

I hereby certify that the following is a correct record of said survey as made by me.

COUNTY BUILDING
IN CITY OF BELOIT

(Signed) O.G. Bleedorn
O.G.B. Dep. County Surveyor.



Copied from P. 367 Vol. 2 County Surveyor's Record