

PLAT AND RECORD

373

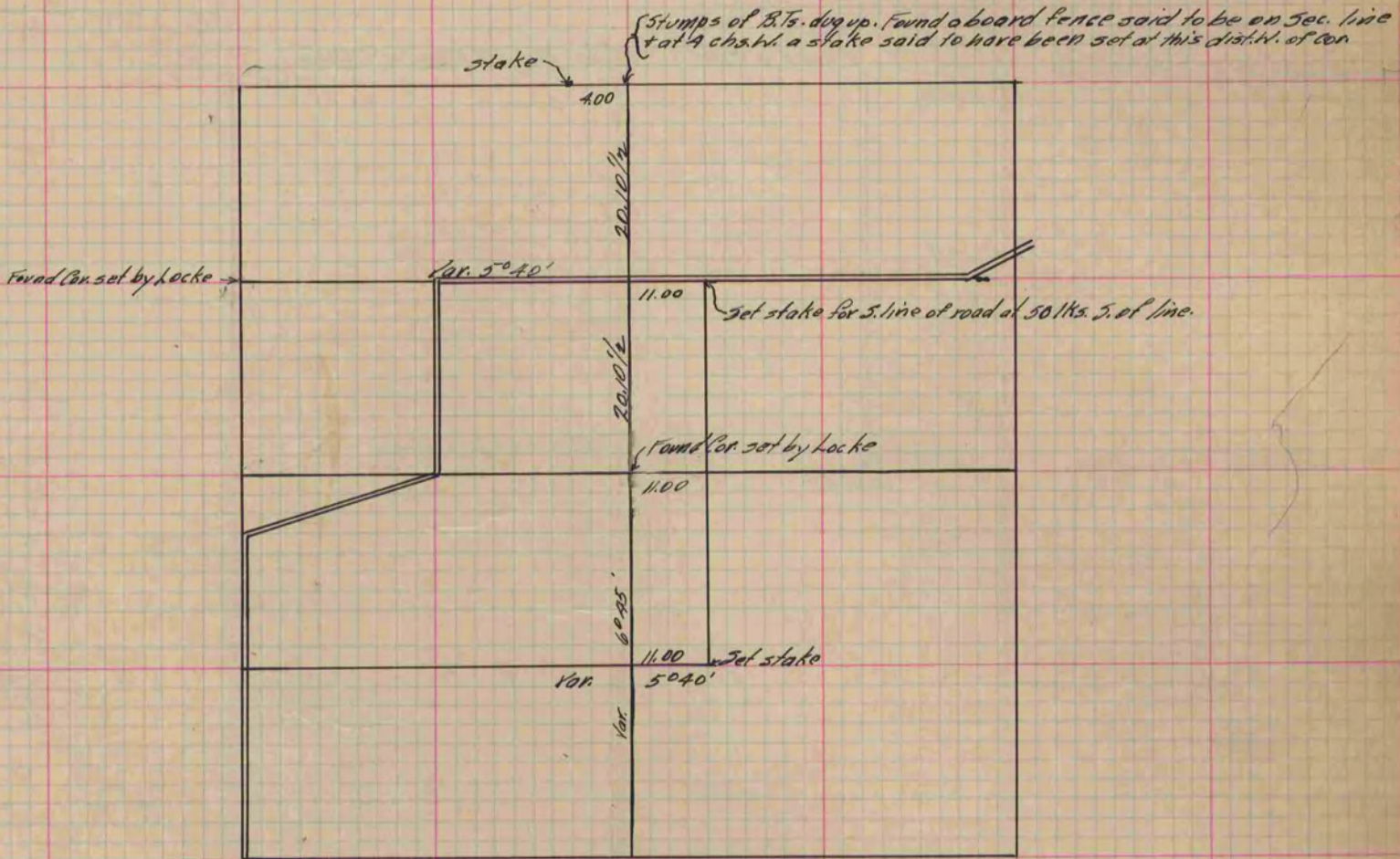
Of a Survey on Section 19 T 6 R 14 E. of the 4 P. M. in Clinton Township
Rock County, Wisconsin, made June the 14th 1882

I hereby certify that the following is a correct record of said survey as made by me.

COUNTY BUILDING
IN CITY OF BELOIT

(Signed) R.K. Lee
RKL

Dep. County Surveyor.



Copied from P. 300 Vol. 2 County Surveyor's Record.