

PLAT AND RECORD

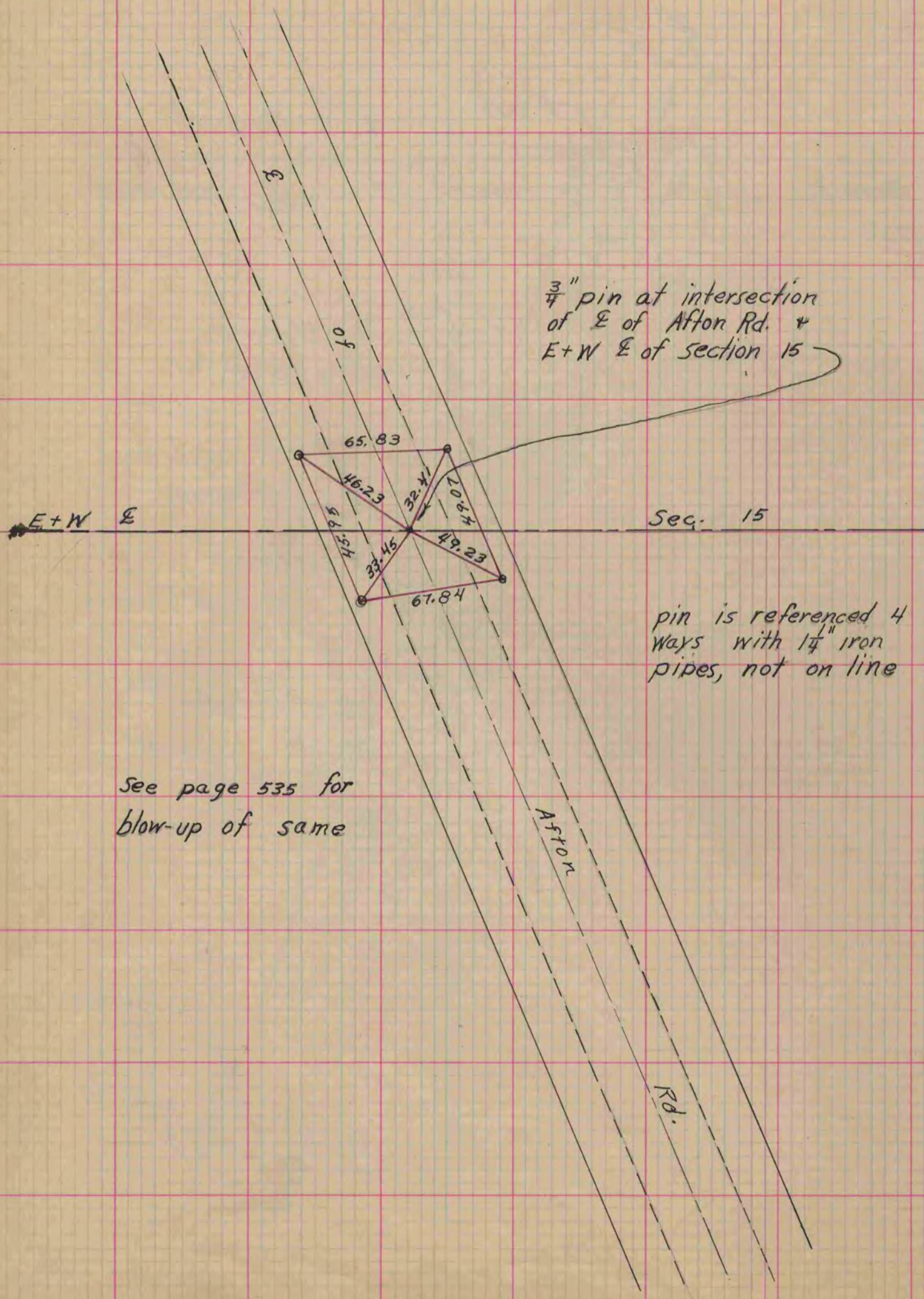
Of a Survey on Section 15 T 1 R 12 E. of the 4 P. M. in BELOIT Township

Rock County, Wisconsin, made JULY the 22 1958

I hereby certify that the following is a correct record of said survey as made by me.

COUNTY BUILDING
IN CITY OF BELOIT

County Surveyor.



$\frac{3}{4}$ " pin at intersection
of E of Afton Rd. +
E+W E of section 15

pin is referenced 4
ways with $\frac{1}{4}$ " iron
pipes, not on line

See page 535 for
blow-up of same