

PLAT AND RECORD

333

Of a Survey on Section 5 T 2 R 12 E. of the 4 P. M. in Rock Township

Rock County, Wisconsin, made July the 20th 1867

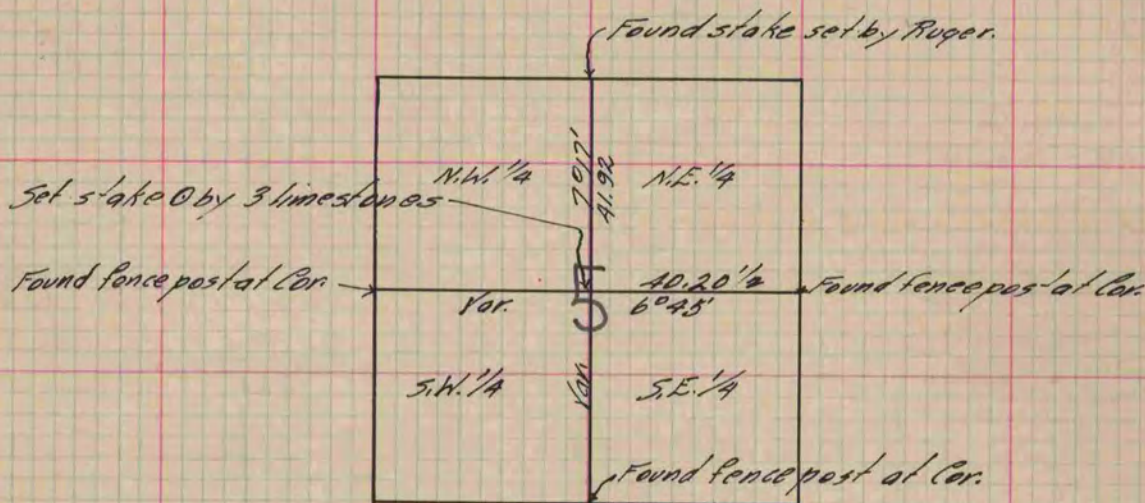
I hereby certify that the following is a correct record of said survey as made by me.

COUNTY BUILDING
IN CITY OF BELOIT

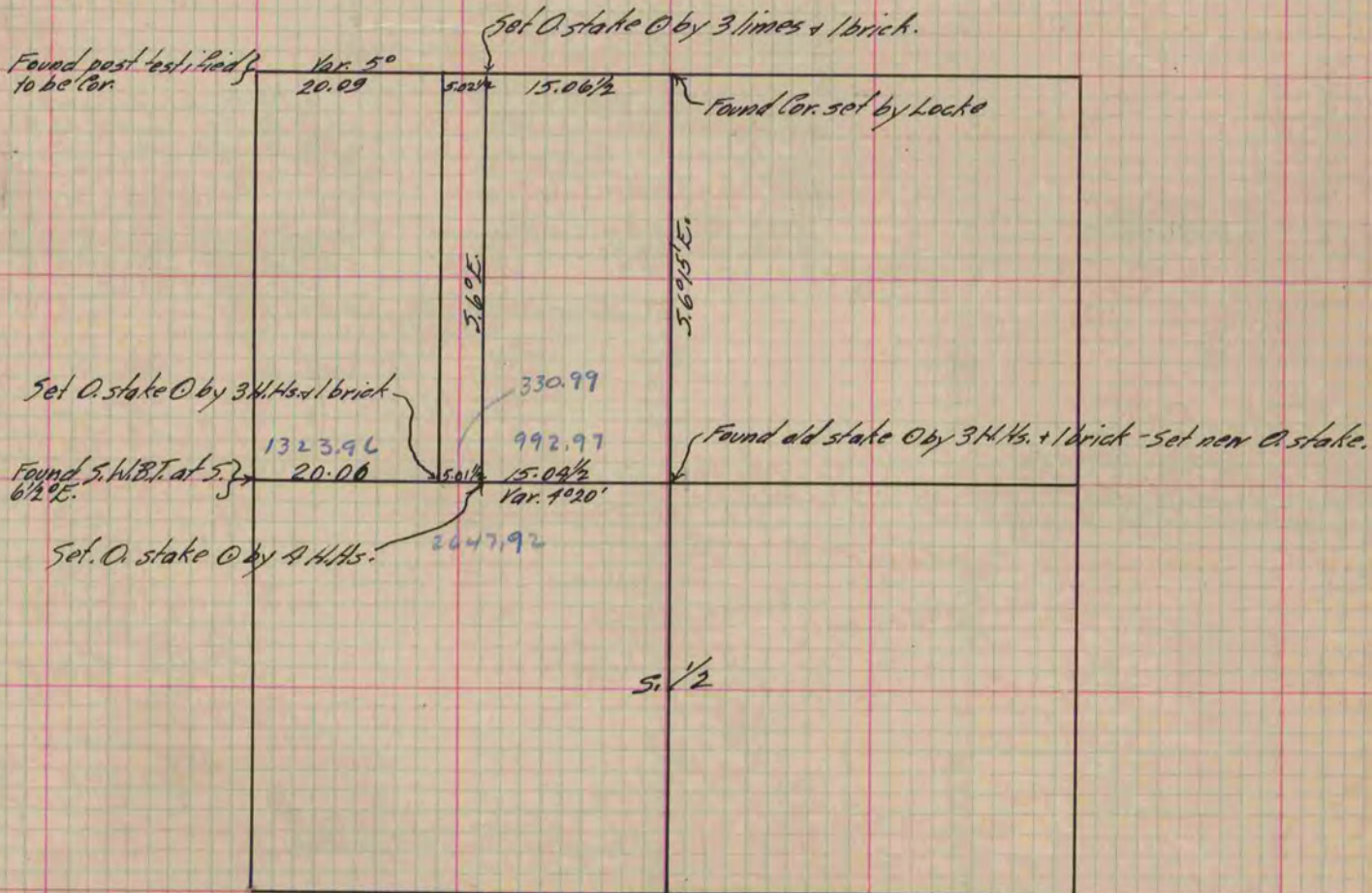
(Signed) R.H. Lee

RHL

County Surveyor.



SEC. 15-1-13 TURTLE



The above is a correct record & plat of a Survey made by me Sept. 3rd, 1868 on sec. 15 T. 1. R. 13 (Turtle)

(Signed) R.H. Lee

Rep. Co. Surveyor

Copied from P. 273 Vol. 1 County Surveyor's Record.