

PLAT AND RECORD

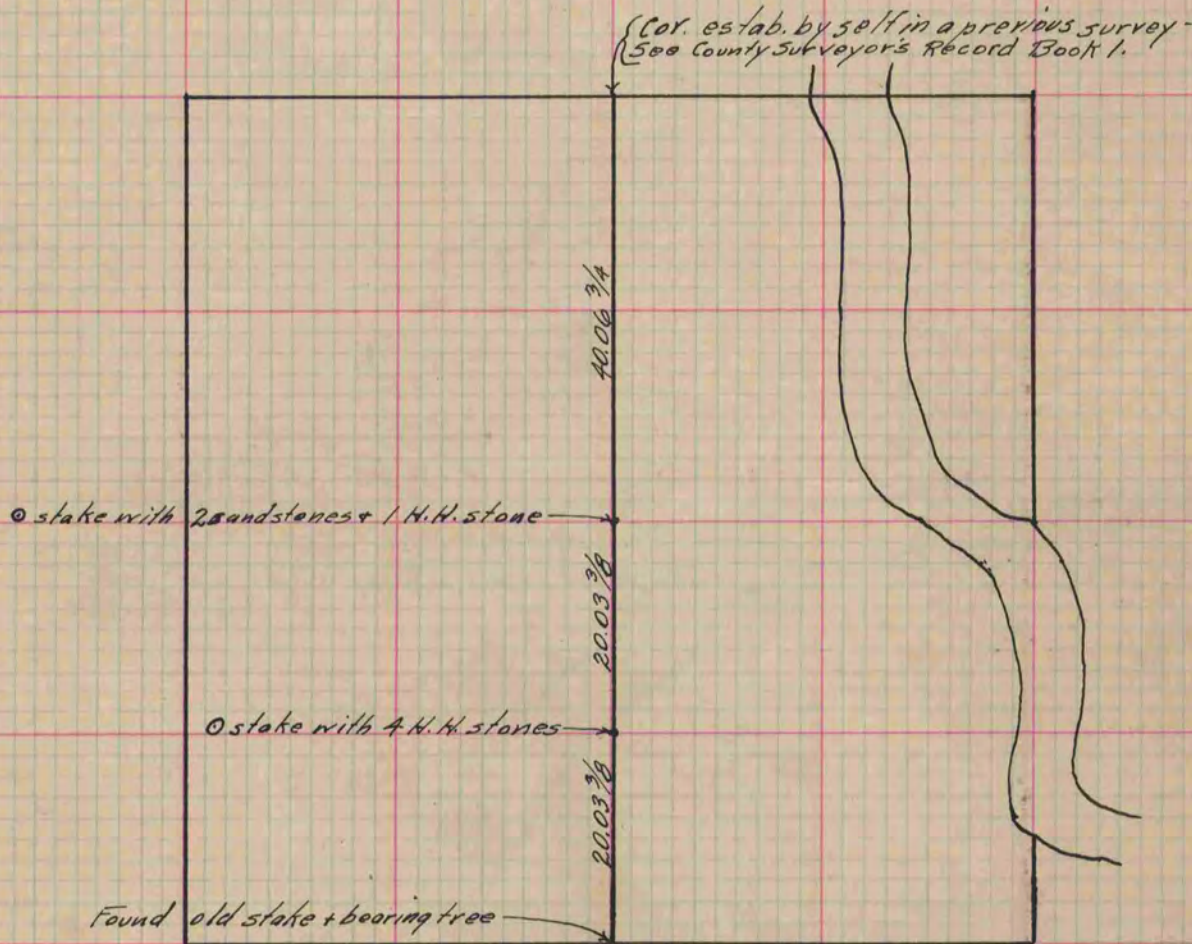
Of a Survey on Section 15 T 3 R 12 E. of the 4 P. M. in Janesville Township
Rock County, Wisconsin, made October the 15th 1869

I hereby certify that the following is a correct record of said survey as made by me.

COUNTY BUILDING
IN CITY OF БЕЛОIT

(Signed) Edward Roger
R. H. B.

{ Deputy
County Surveyor.



The Survey was made to ascertain the N + S. Gr. line. It is a true
Line from the South Gr. Cor. Using the transit in Making the Survey.

Copied from the Upper 1/2 of Page 12 Vol. 2 Original County Surveyor's Record.