

PLAT AND RECORD

S.E. 1/4

Of a Survey on Section 35 T 1 R 12 E. of the 4 P. M. in City of Beloit Township

Rock County, Wisconsin, made APRIL the 10th. 1961

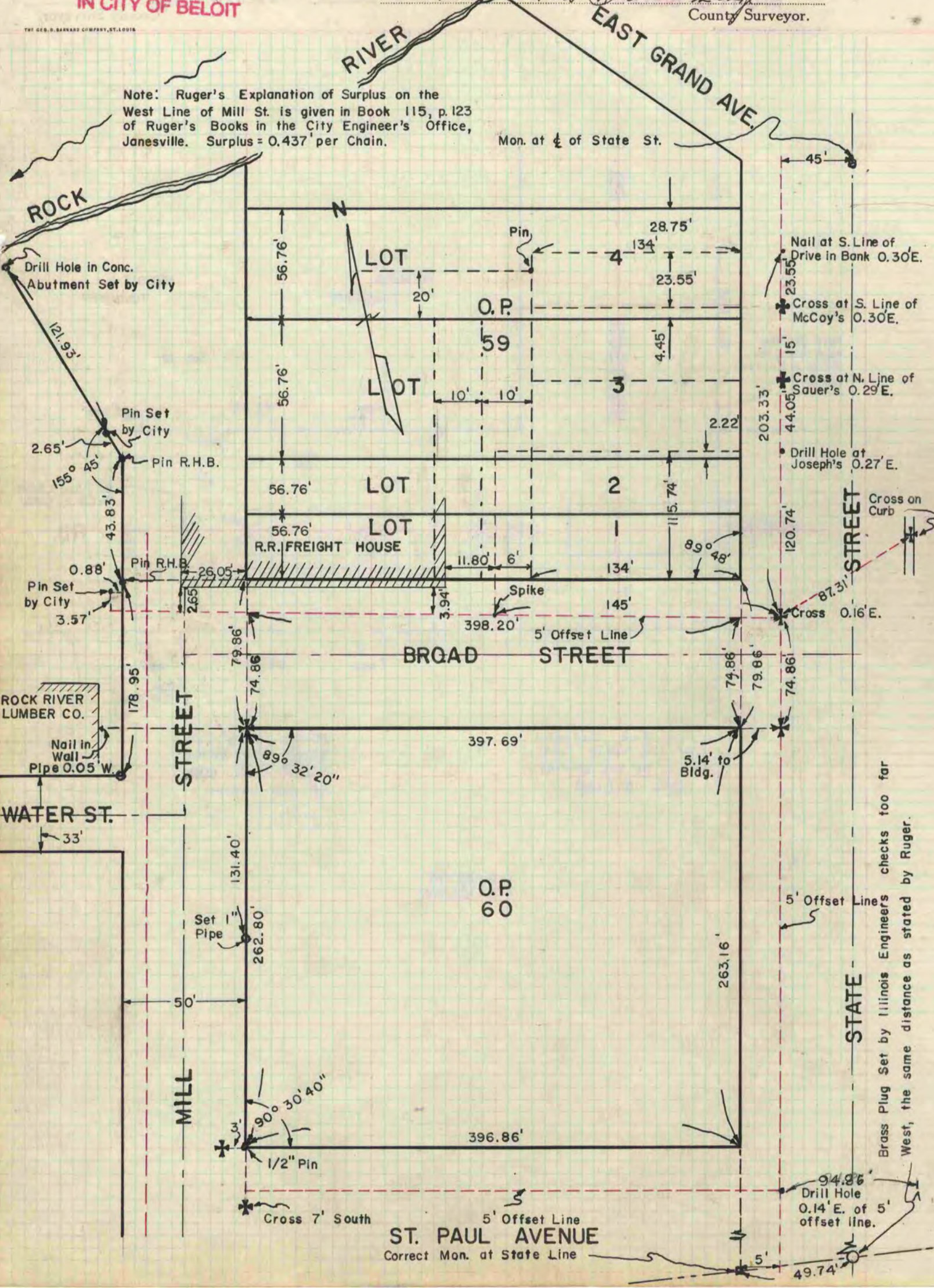
I hereby certify that the following is a correct record of said survey as made by me.

**COUNTY BUILDING
IN CITY OF БЕЛОИТ**

Richard H. Batten
County Surveyor.

Note: Ruger's Explanation of Surplus on the West Line of Mill St. is given in Book 115, p. 123 of Ruger's Books in the City Engineer's Office, Janesville. Surplus = 0.437' per Chain.

Mon. at 1/4 of State St.



Brass Plug Set by Illinois Engineers checks too far West, the same distance as stated by Ruger.

ST. PAUL AVENUE
Correct Mon. at State Line