

PLAT AND RECORD

COUNTY BUILDING
IN CITY OF BELOIT

Of a Survey on Section 9 T 4 R 10 E. of the 4 P. M. in UNION Township

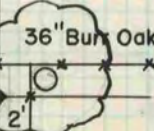
Rock County, Wisconsin, made JUNE the 15 th. 1959

I hereby certify that the following is a correct record of said survey as made by me.

Richard A. Batteman

County Surveyor.

N.W. CORNER OF SECTION 9-4-10

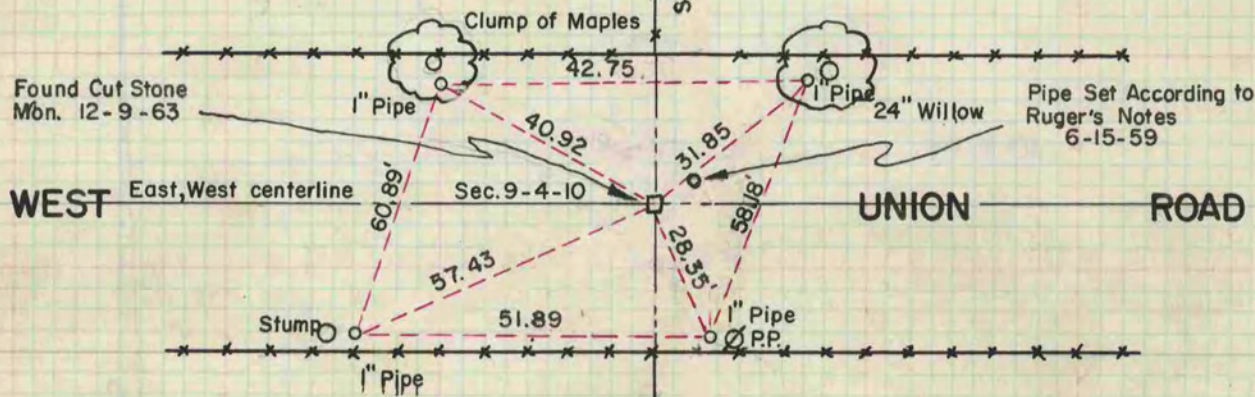


See No. 6972

Note: Found cut stone monument marked 4,5,8,9 leaning on tree, re-set in same hole and surrounded with dirt mound.

EAST 1/4 CORNER SECTION 9-4-10

R.Thom
T.Kerwin
J.Holmes



Note: Dug hole 12'x6'x3' and found nothing.

Re-set according to re-survey by Edward Ruger in 1871.

Found cut stone mon. 12-9-63

Remeasured references

Combs
Kerwin

REFERENCES TO PIPE SET ACCORDING TO RUGER'S NOTES.

