

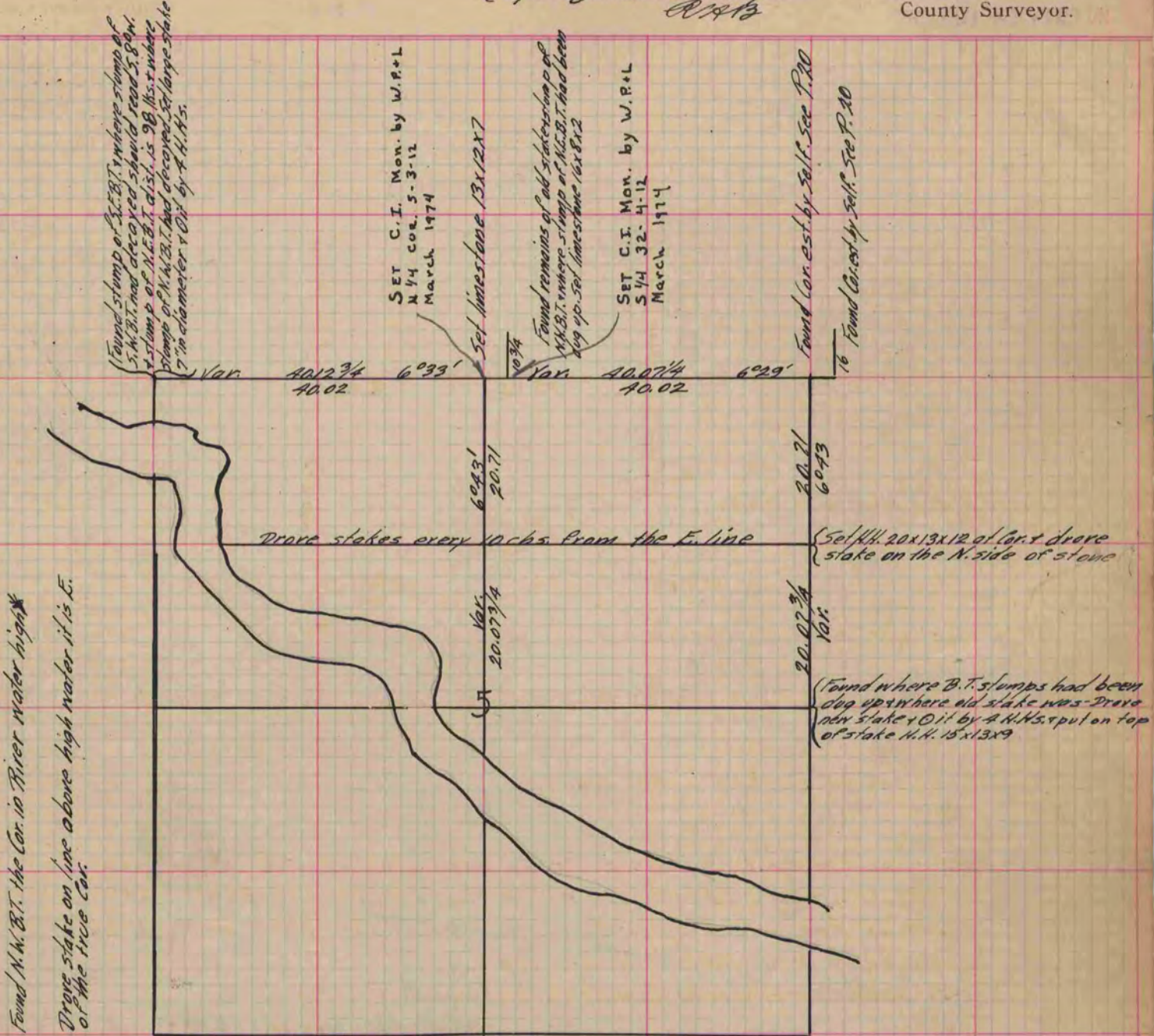
Of a Survey on Sections 5 516 T 3 R 12 E. of the 4 P. M. in Janesville Township

Rock County, Wisconsin, made May the 29 1876

I hereby certify that the following is a correct record of said survey as made by me.

(Signed) Edward Roger  
R. R. A.

County Surveyor.



Copied From P. 163 Vol. 2 Original County Surveyor's Record.