

PLAT AND RECORD

Of a Survey on Section 23+24 T 3 R 12 E. of the 4 P. M. in Sanesville Township
 +19 3 13 Harmony
 Rock County, Wisconsin, made September 28 + 4th of the November 1885

I hereby certify that the following is a correct record of said survey as made by me.

COUNTY BUILDING
 IN CITY OF BELOIT

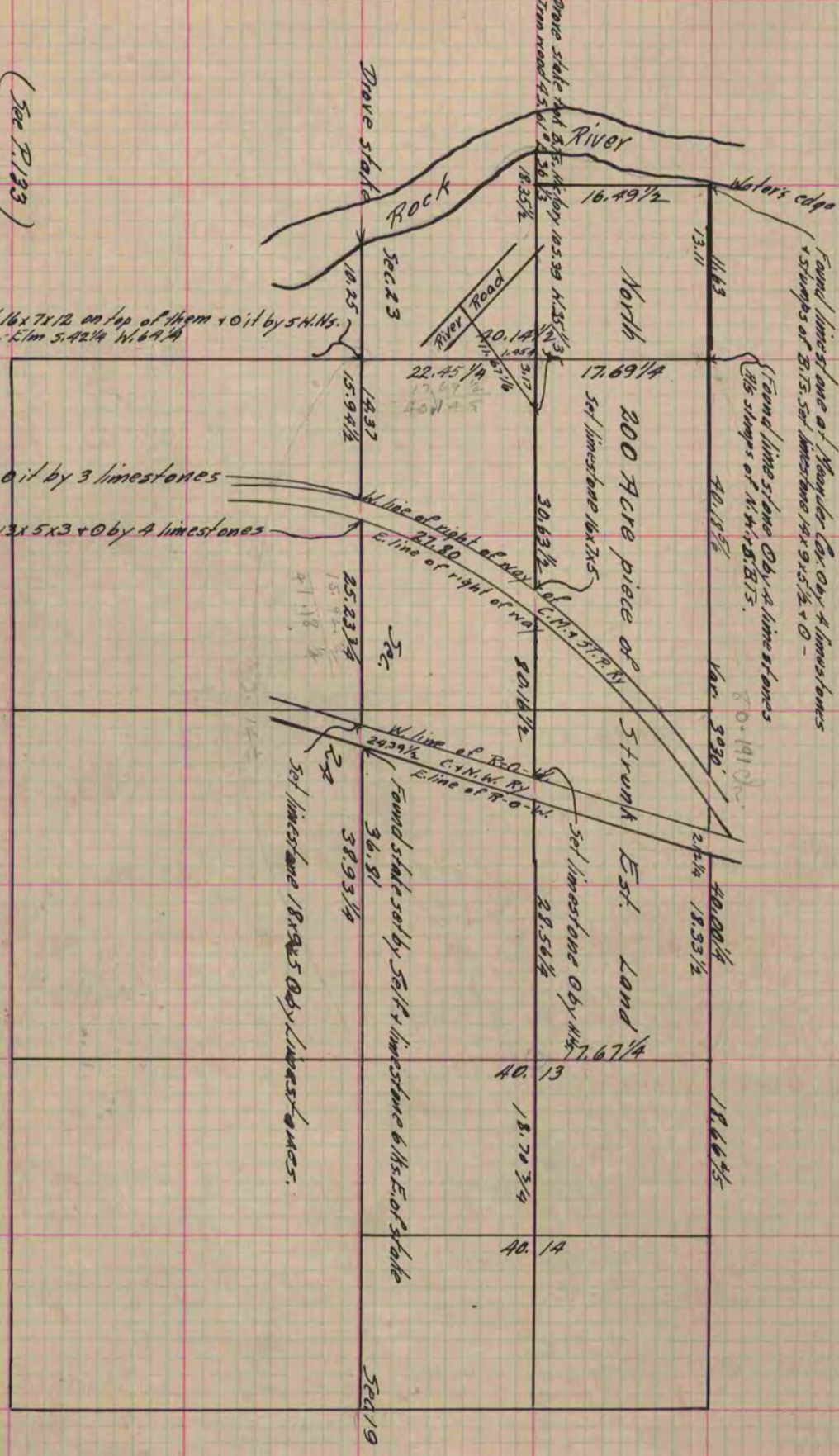
(Signed) Edward Ruder
 R1913 County Surveyor.

(See P. 193)

Found H.H. put in by Self put H.H. 16x7x12 on top of them + oil by 5 H.H.s.
 New B.T.S. hard Maple 16x 80 1/4 W. 55 1/2 - E. 16m 5.42 1/4 W. 69 1/4

Drove stake + oil by 3 limestones
 Found limestone 13x5x3 + oil by 4 limestones

Found limestone at Meander Cor. Obv. 4 limestones
 + strips of B.T.S. soft limestone 14x 9x5 1/2 + O -
 (Found limestone Obv. 4 limestones
 9 1/2 strips of N.H. + B.T.S.
 80 + 141 0/2)



Copied from P. 242 Vol. 2 County Surveyor's Record.