

PLAT AND RECORD

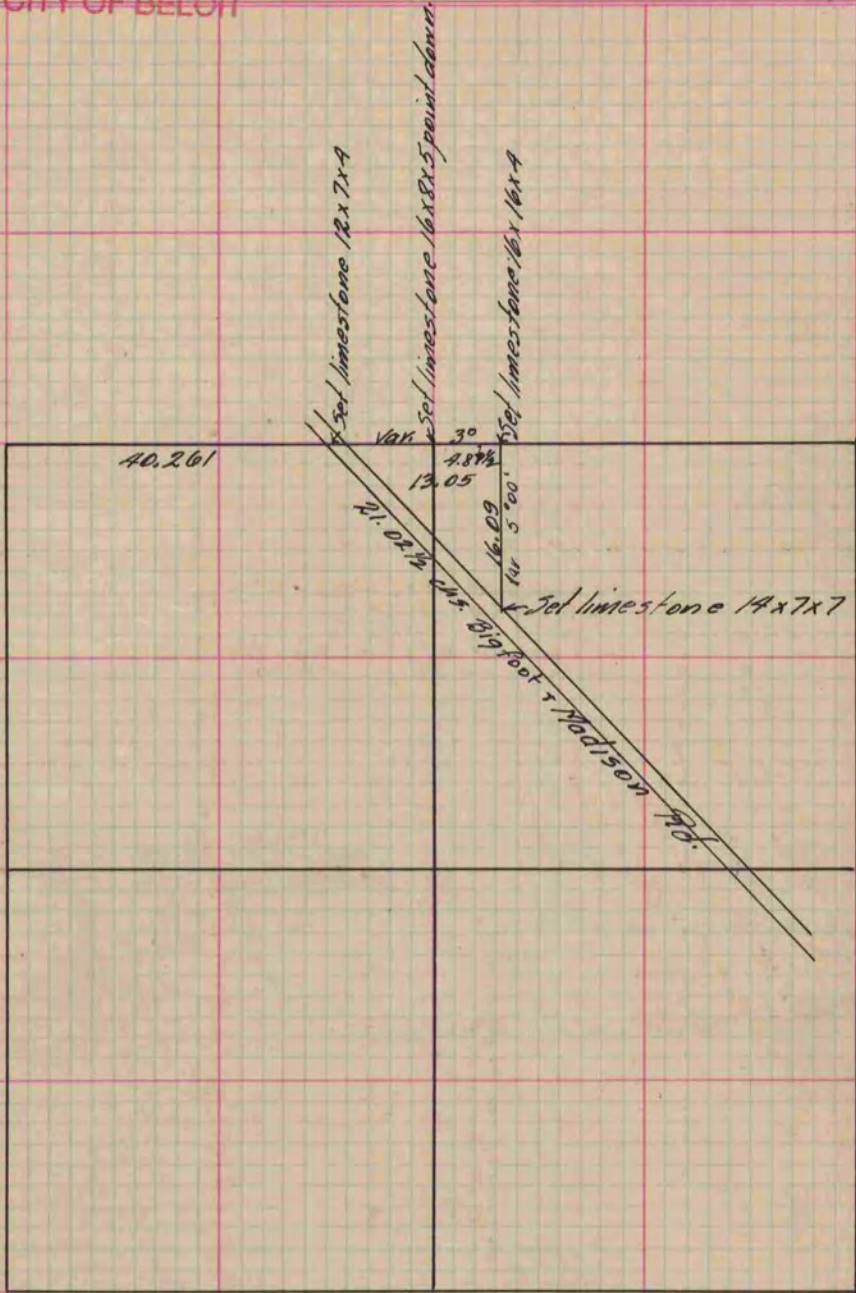
Of a Survey on Section 34 T 3 R 14 E. of the 4 P. M. in Sohnstown Township
Rock County, Wisconsin, made January the 13 1886

I hereby certify that the following is a correct record of said survey as made by me.

(Signed) Edward Ruger
CRAB

County Surveyor.

COUNTY BUILDING
IN CITY OF BELOIT



Copied from P. 224 Vol. 2 County Surveyor's Record.