

# PLAT AND RECORD

Of a Survey on Section 21 T 4 R 12 E. of the 4 P. M. in FULTON Township

Rock County, Wisconsin, made MAY the 31st 1974

I hereby certify that the following is a correct record of said survey as made by me.

COUNTY BUILDING  
IN CITY OF BELOIT

*Augusta Lee*  
County Surveyor.

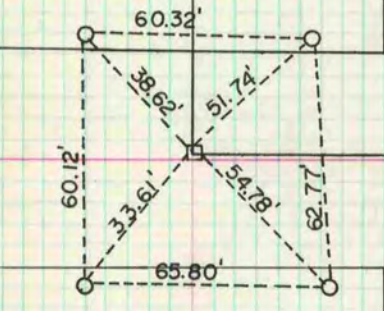
VOLUME 4 PAGE 488

VOLUME 4 PAGE 458

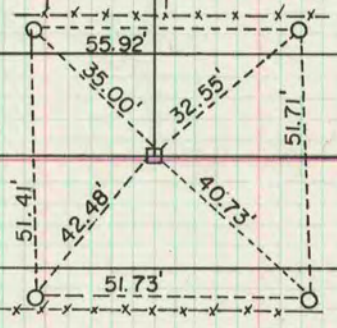
VOLUME 4 PAGE 458

21

AT S.E. COR. SEC. 21-4-12  
SET C.I. MON. BY CHECKING  
OCCUPATION E. AND S.  
5-31-74 M.L. W.K.



AT S.W. COR. SEC. 21-4-12  
FD. NOTHING, SET MON. BY  
PRORATION FROM SOUTH  
7-16-74 M.L. J.L. B.L.



AT S1/4 COR. SEC. 21-4-12 FD. NOTHING  
SET MON. HALF-WAY BETWEEN S.W. AND S.E. COR.

7-16-74 M.L. J.L. B.L.

BOOK 170 PAGE 83, 117, 118