

# PLAT AND RECORD

Of a Survey on Section 22 T 4 R 14 E. of the 4 P. M. in Lima Township.

Rock County, Wisconsin, made March the 27 1871

I hereby certify that the following is a correct record of said survey as made by me.

COUNTY BUILDING  
IN CITY OF BELOIT

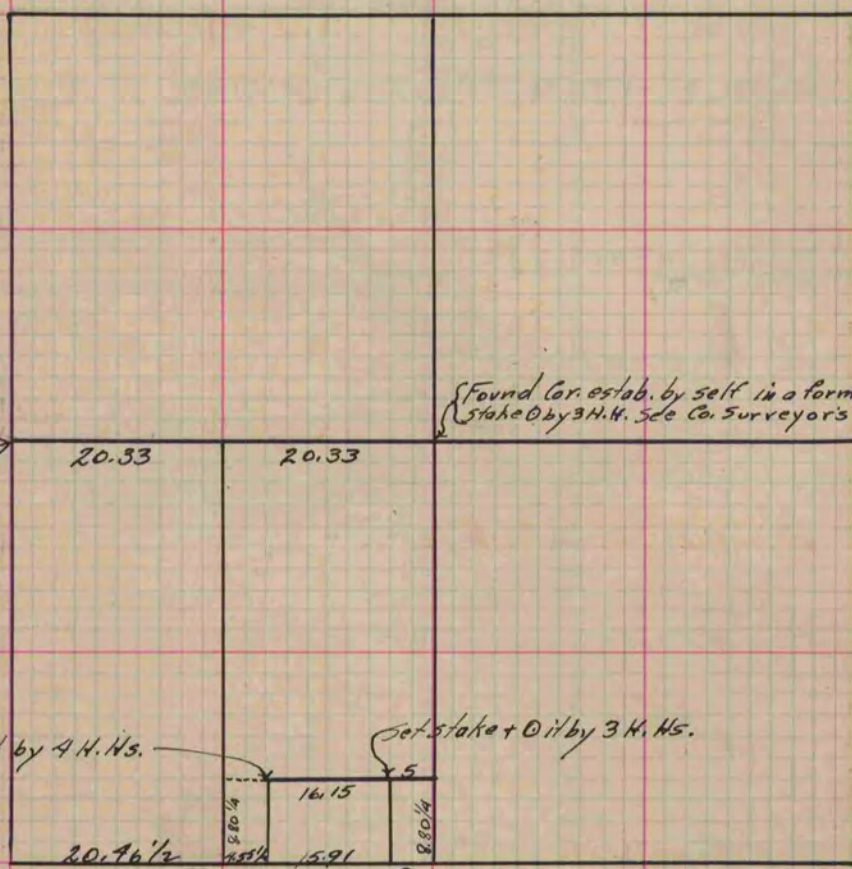
(Signed) Edward Ruger  
RRB County Surveyor.

Found Cor. estab. by self in a former Survey - stake 0 by 3 H. Hs. - See County Surveyor's Record.

Found Cor. estab. by self in a former Survey stake 0 by 3 H. H. See Co. Surveyor's Record.

Set stake + 0 it by 4 H. Hs.

Set stake + 0 it by 3 H. Hs.



For Cors. on S. side of Sec. 22 see plat & record of Sec. 27 above.

Copied from Page 35 Vol. 2. Original County Surveyor's Record.