

PLAT AND RECORD

Of a Survey on Section 2 T / R 3 E. of the 4 P. M. in Turtle Township

Rock County, Wisconsin, made February the 24th 1859

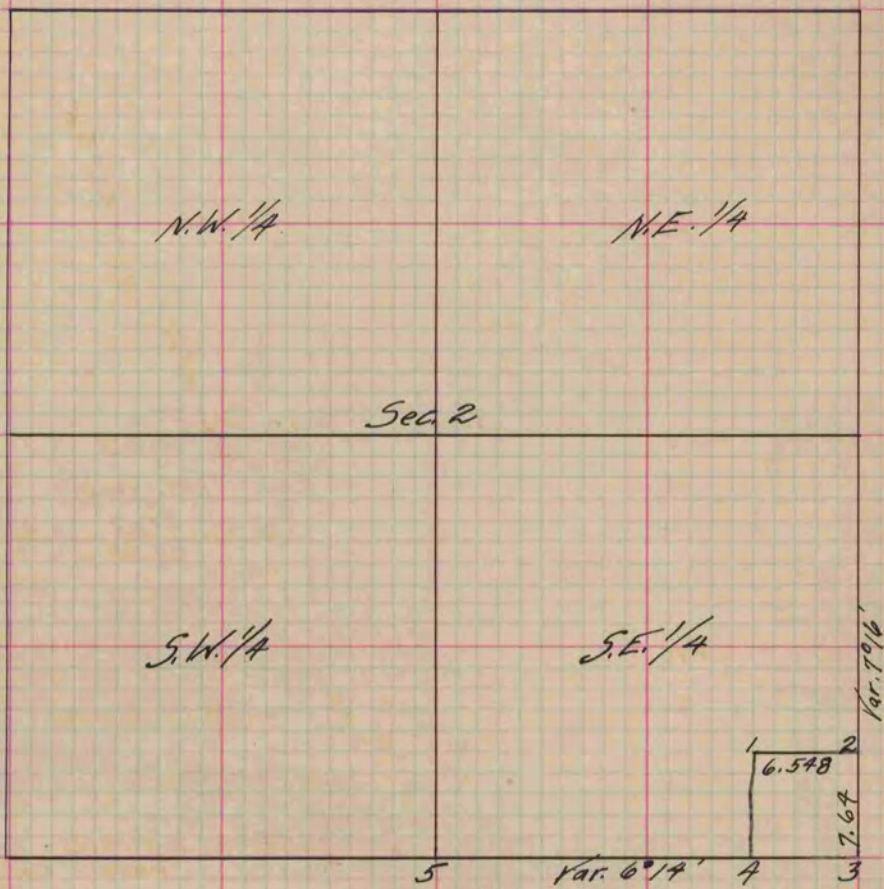
I hereby certify that the following is a correct record of said survey as made by me.

COUNTY BUILDING
IN CITY OF BELOIT

(Signed) Edward Ruger
Ruger

County Surveyor.

For J. Swingle & Mr. Bessegmier
Distances given in chains.
Variations marked on the lines.



- Fig. 3 Old witness trees gone took new ones
- " " White Oak 36 S. 31° 23' E. 157 1/4
- " " " " 4 N. 46° 37' W. 68 Var. 6°
- " 5 Took new witness trees.
- " " Black Oak 4 S. 57° 15' W. 141 1/2
- " " " " 10 N. 72° 50' W. 108 Var. 6° 14'

Copied from P. 100 Vol. one Original County Surveyor's Record.