

# PLAT AND RECORD

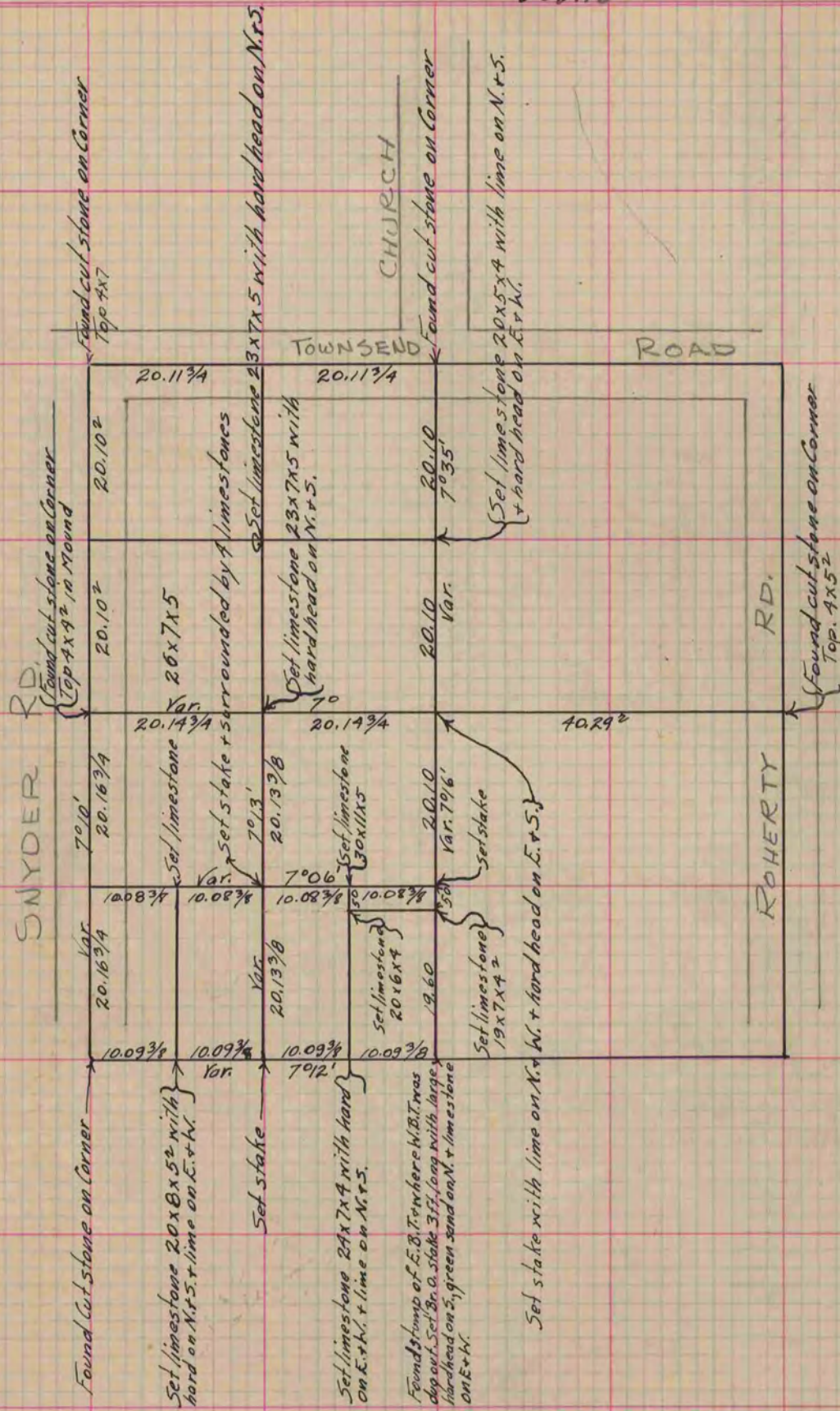
Of a Survey on Section 27 T 3 R 11 E. of the 4 P. M. in Centre Township

Rock County, Wisconsin, made May the 29 1866

I hereby certify that the following is a correct record of said survey as made by me.

COUNTY BUILDING  
IN CITY OF BELOIT

(Signed) S. D. Locke.  
RMS County Surveyor.



Copied from Page 232 Vol. 1. Original County Surveyor's Record.