

PLAT AND RECORD

Of a Survey on Sections 25 & 36 T 1 R 12 E. of the 4 P. M. in Beloit Township

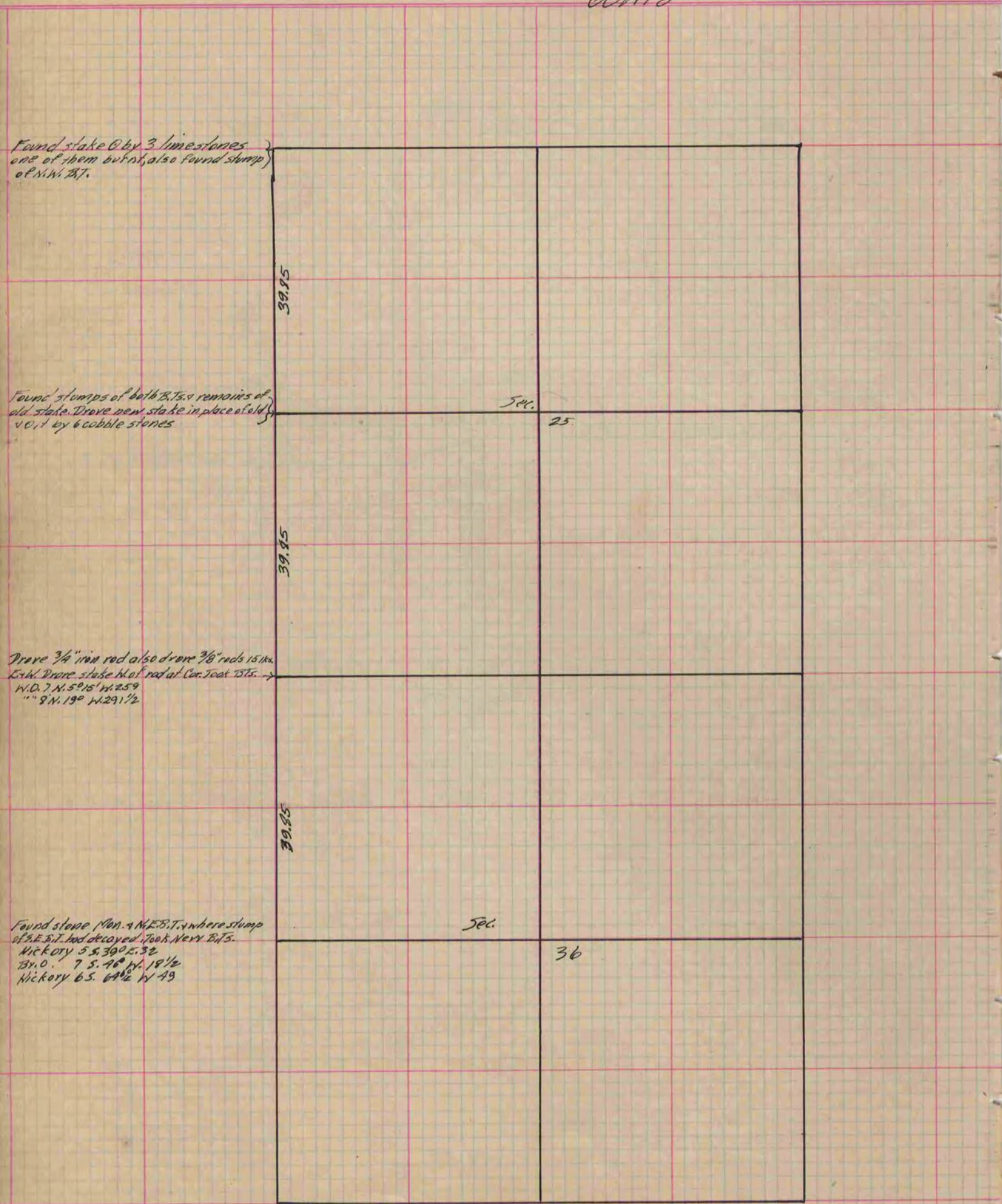
Rock County, Wisconsin, made June the 1882

I hereby certify that the following is a correct record of said survey as made by me.

COUNTY BUILDING
IN CITY OF BELOIT

(Signed) Edward Reger.
ER

County Surveyor.



Copied from T. 328 Vol. 2 County Surveyor's Record.