

PLAT AND RECORD

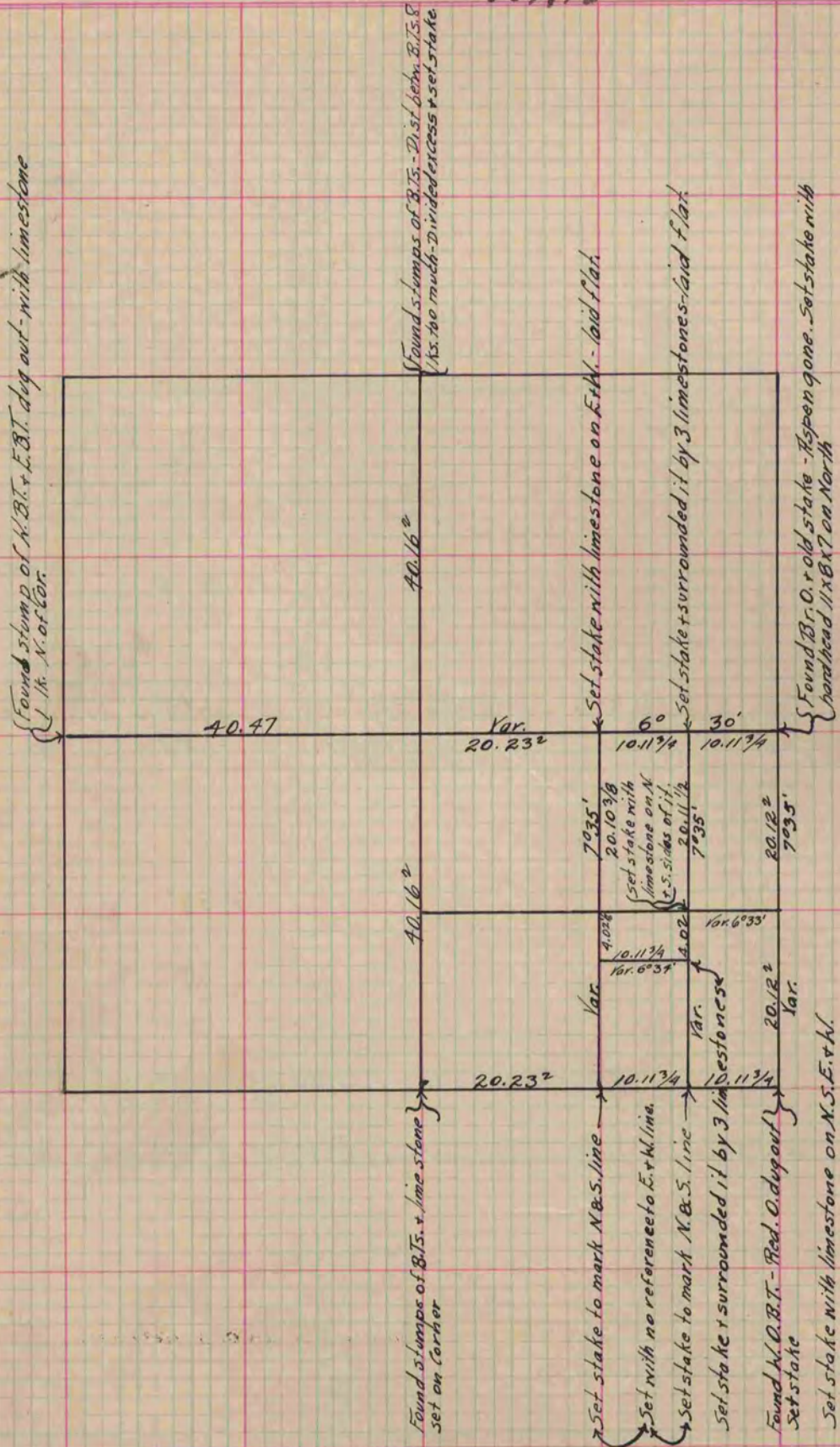
Of a Survey on Section 26 T 2 R 11 E. of the 4 P. M. in Plymouth Township
 Rock County, Wisconsin, made December the 8th & 9th 19

I hereby certify that the following is a correct record of said survey as made by me.

COUNTY BUILDING
 IN CITY OF BELOIT

(Signed) S.D. Locke
S.D. Locke

County Surveyor.



Copied from Page 226 Vol. 1. Original County Surveyor's Record.