

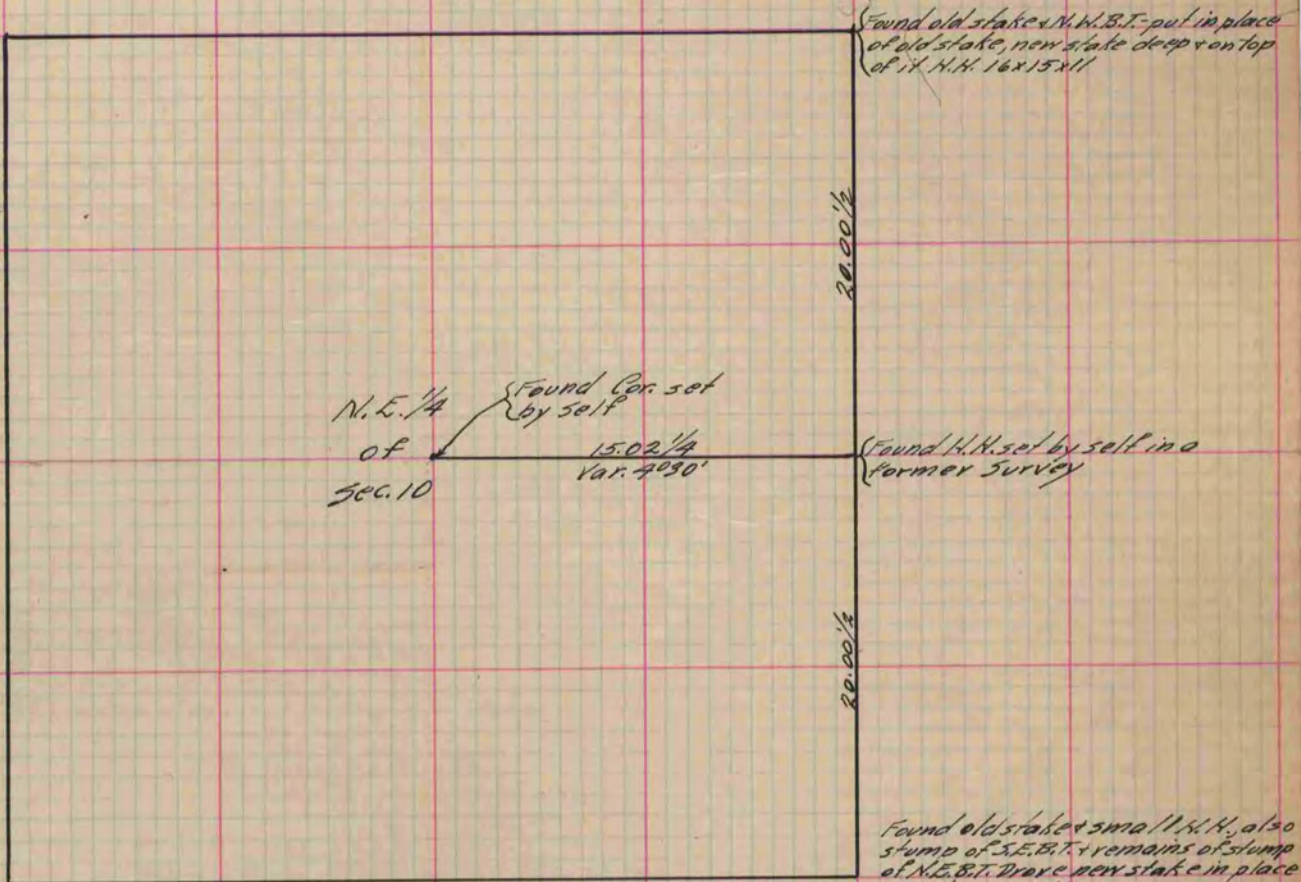
PLAT AND RECORD

Of a Survey on ^{NE 1/4} Section 10 T 3 R 12 E. of the 4 P. M. in Janesville Township
 Rock County, Wisconsin, made Nov. the 20th 1887

I hereby certify that the following is a correct record of said survey as made by me.

COUNTY BUILDING
 IN CITY OF БЕЛОIT

(Signed) Edward Ruger
ERUGER County Surveyor.



See P. 15

Copied from P. 337 Vol. 2 County Surveyor's Record.