

PLAT AND RECORD

EMU JUI YIMLOO
TKLBI KO YTD KI

Of a Survey on Section 3 T 1 R 11 E. of the 4 P. M. in NEWARK Township

Rock County, Wisconsin, made 4 the 9 1966

I hereby certify that the following is a correct record of said survey as made by me.

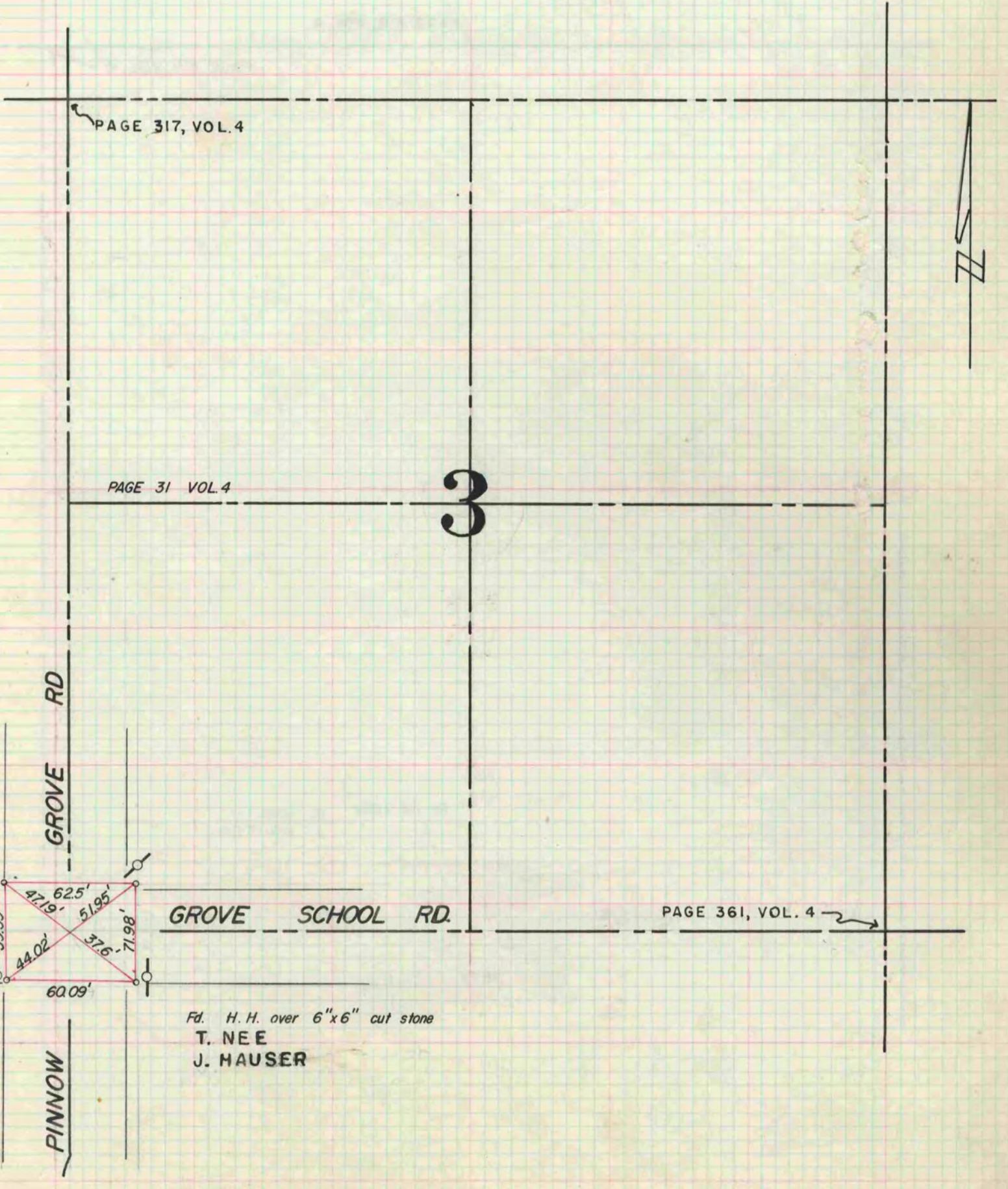
COUNTY BUILDING
IN CITY OF BELOIT

THE GEO. S. BARNARD COMPANY, ST. LOUIS



R. H. Battelman Jr

County Surveyor.



PAGE 317, VOL. 4

PAGE 31 VOL. 4

PAGE 361, VOL. 4