

# PLAT AND RECORD

Of a Survey on Section 28 T 2 R 14 E. of the 4 P. M. in Bradford Township

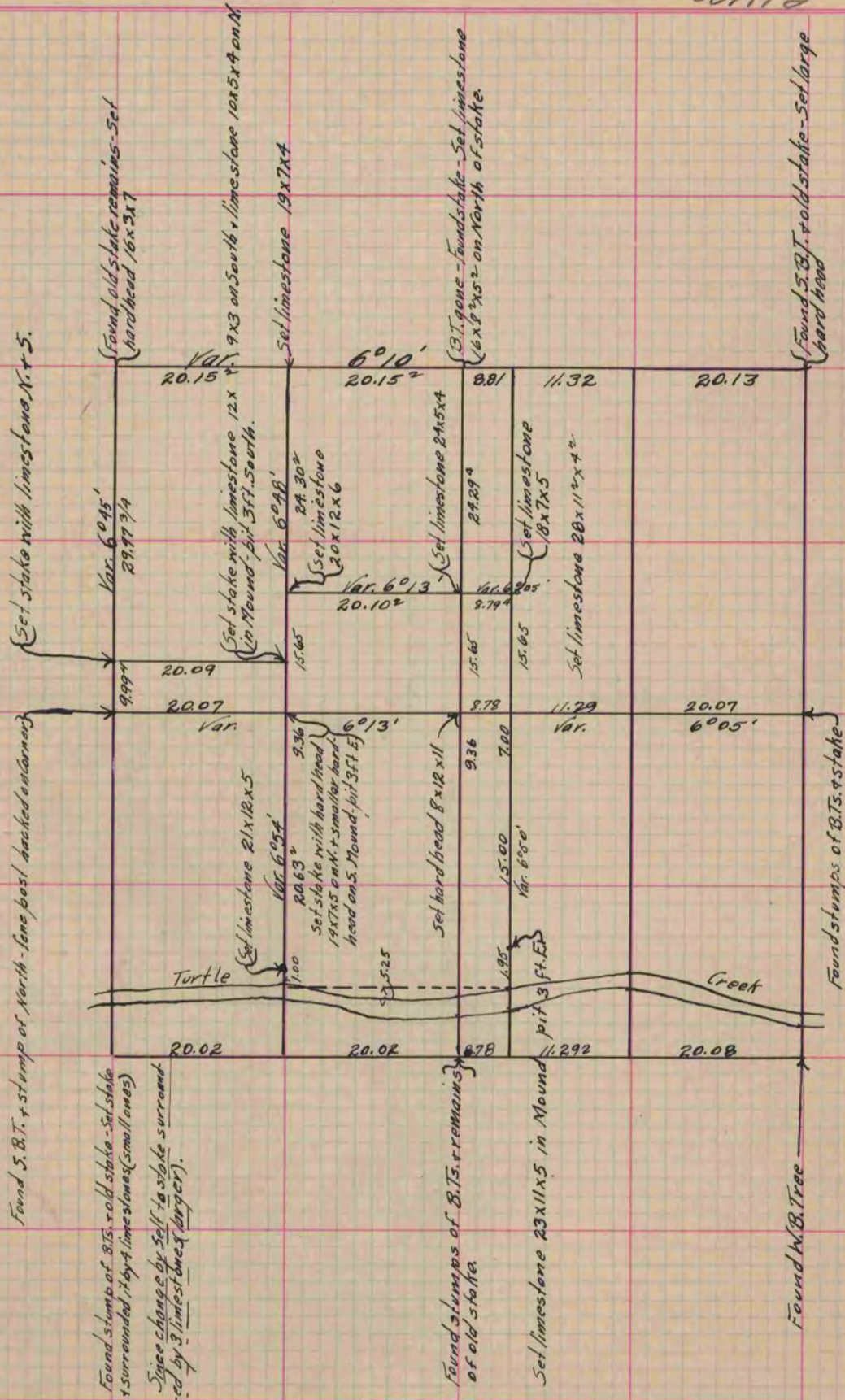
Rock County, Wisconsin, made May 30 + 31<sup>st</sup> + June the 1<sup>st</sup> 1865

I hereby certify that the following is a correct record of said survey as made by me.

COUNTY BUILDING  
IN CITY OF BELOIT

(Signed) S. D. Locke  
SMB

County Surveyor.



Copied from Page 221 Vol. 1. Original County Surveyor's Record.