

# PLAT AND RECORD

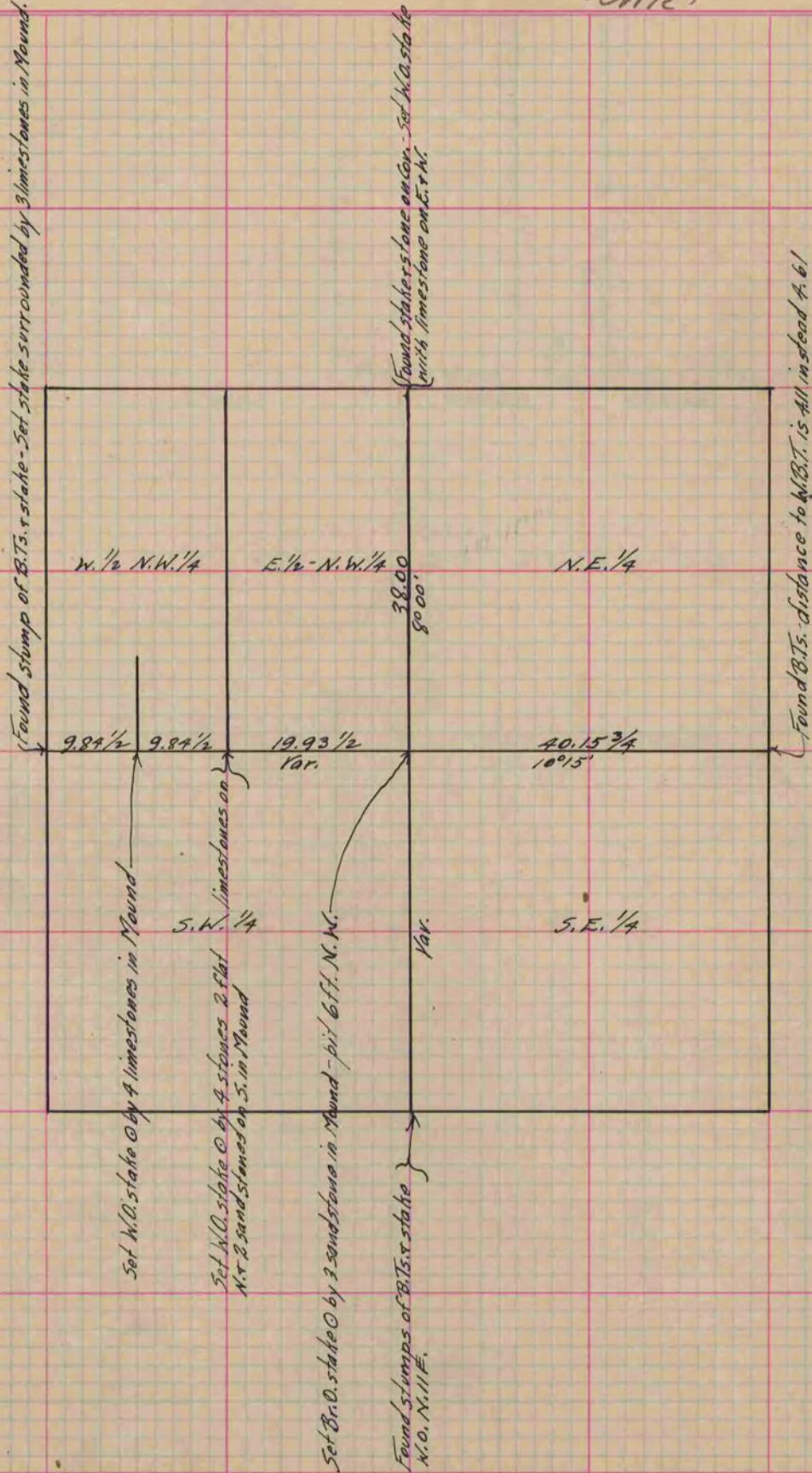
Of a Survey on Section 6 T 2 R 11 E. of the 4 P. M. in Plymouth Township  
Rock County, Wisconsin, made October the 8<sup>th</sup> 1867

I hereby certify that the following is a correct record of said survey as made by me.

COUNTY BUILDING  
IN CITY OF BELOIT

(Signed) S. D. Locke  
S.D.L.

County Surveyor.



Copied from Page 251 Vol. 1. Original County Surveyor's Record.