

PLAT AND RECORD

Of a Survey on Section *NE 1/4 NW 1/4 22T 3 R 12 E.* of the 4 P. M. in *Janesville* Township

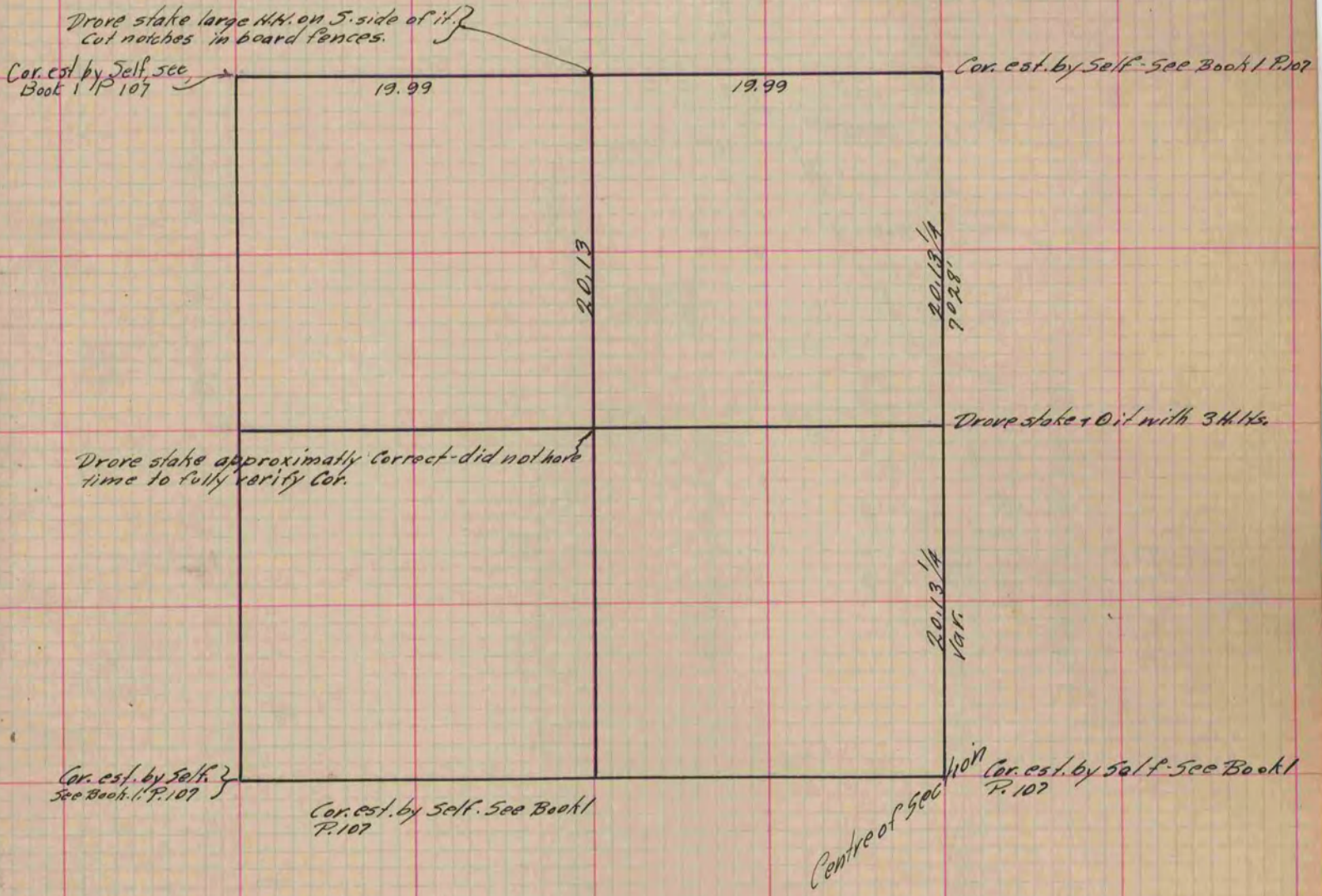
Rock County, Wisconsin, made *May* the *21* 18*71*

I hereby certify that the following is a correct record of said survey as made by me.

COUNTY BUILDING
IN CITY OF БЕЛОIT

(Signed) *Edward Ruger*
E. R. B.

County Surveyor.



Copied from P. 96 Vol. 2. Original County Surveyor's Record.