

PLAT AND RECORD

W. 1/2 of N.W. 1/4
 Of a Survey on, Section 26 T 4 R 13 E. of the 4 P. M. in Milton Township
 Rock County, Wisconsin, made June the 29 + 30 1875

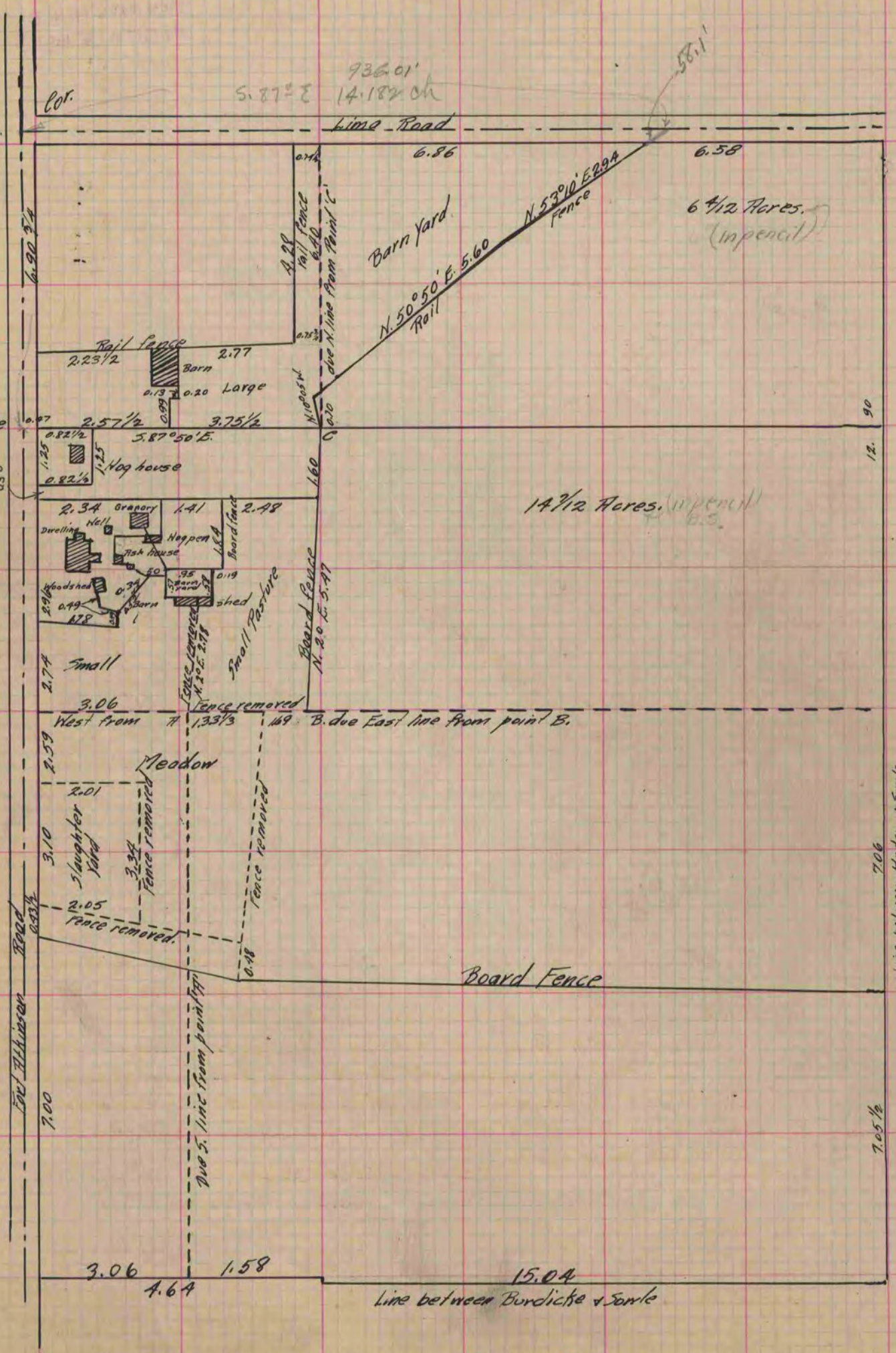
I hereby certify that the following is a correct record of said survey as made by me.

COUNTY BUILDING
 IN CITY OF BELOIT

(Signed) Edward Ruger
 RAB

County Surveyor.

Pertaining to the Estate of the Late James Somle showing the location of the buildings & fences as well as the location of the fences standing at the date of the will, but since removed. Also the due South line from point A due West line from point A due E. line from point B due North line from point C. Distances given in chains & decimals of a chain. Courses per true Meridian Var. of needle 6 47 E.



Copied from P. 50 Vol. County Surveyor's Record.