

PLAT AND RECORD

Of a Survey on Section 2 T 2 R 13 E. of the 4 P. M. in La Prairie Township

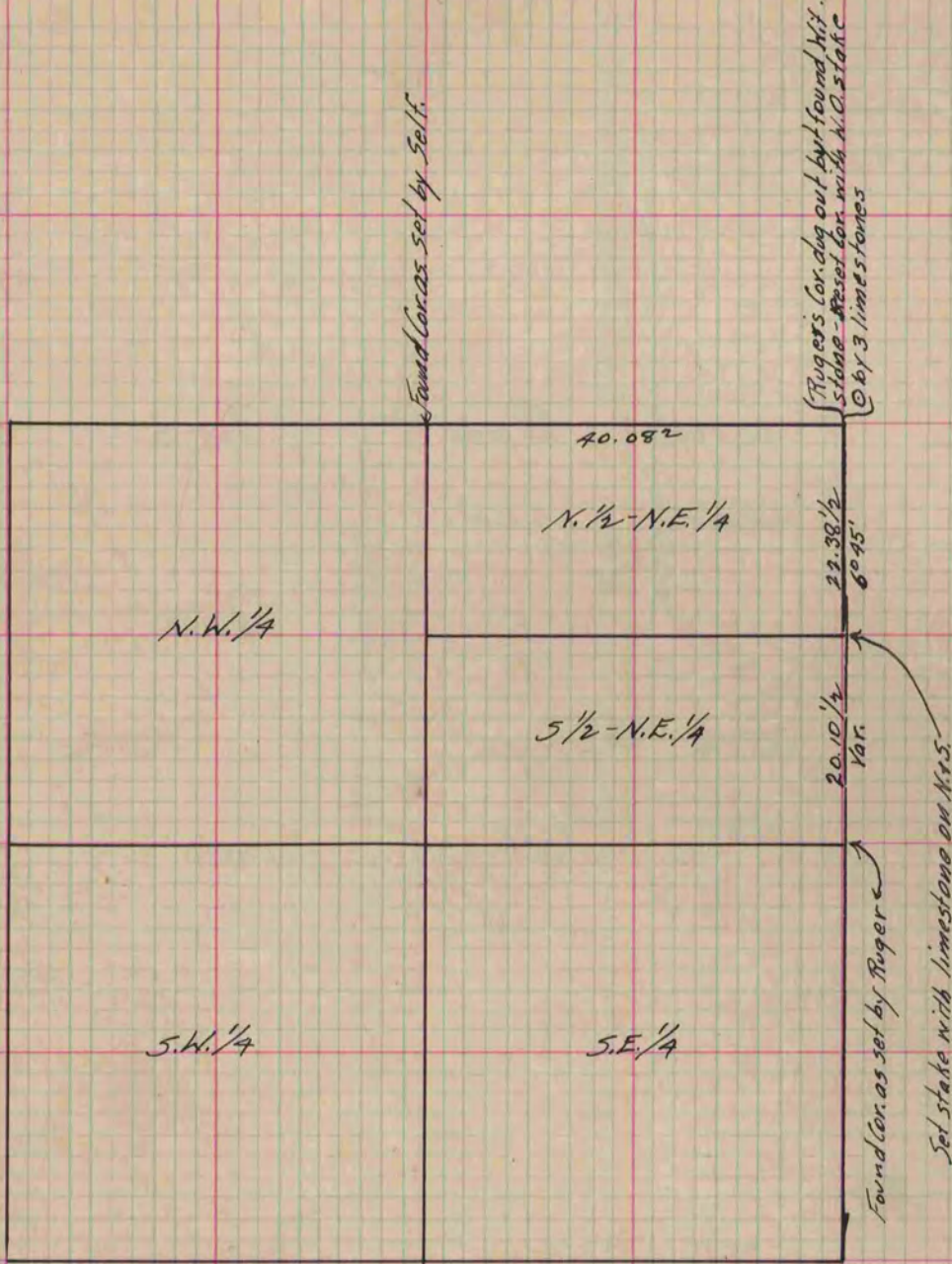
Rock County, Wisconsin, made September the 24th 1867

I hereby certify that the following is a correct record of said survey as made by me.

COUNTY BUILDING
IN CITY OF БЕЛОIT

(Signed) S.D. Locke
RMS

County Surveyor.



Copied from Page 249 Vol. 1. Original County Surveyor's Record.