

PLAT AND RECORD

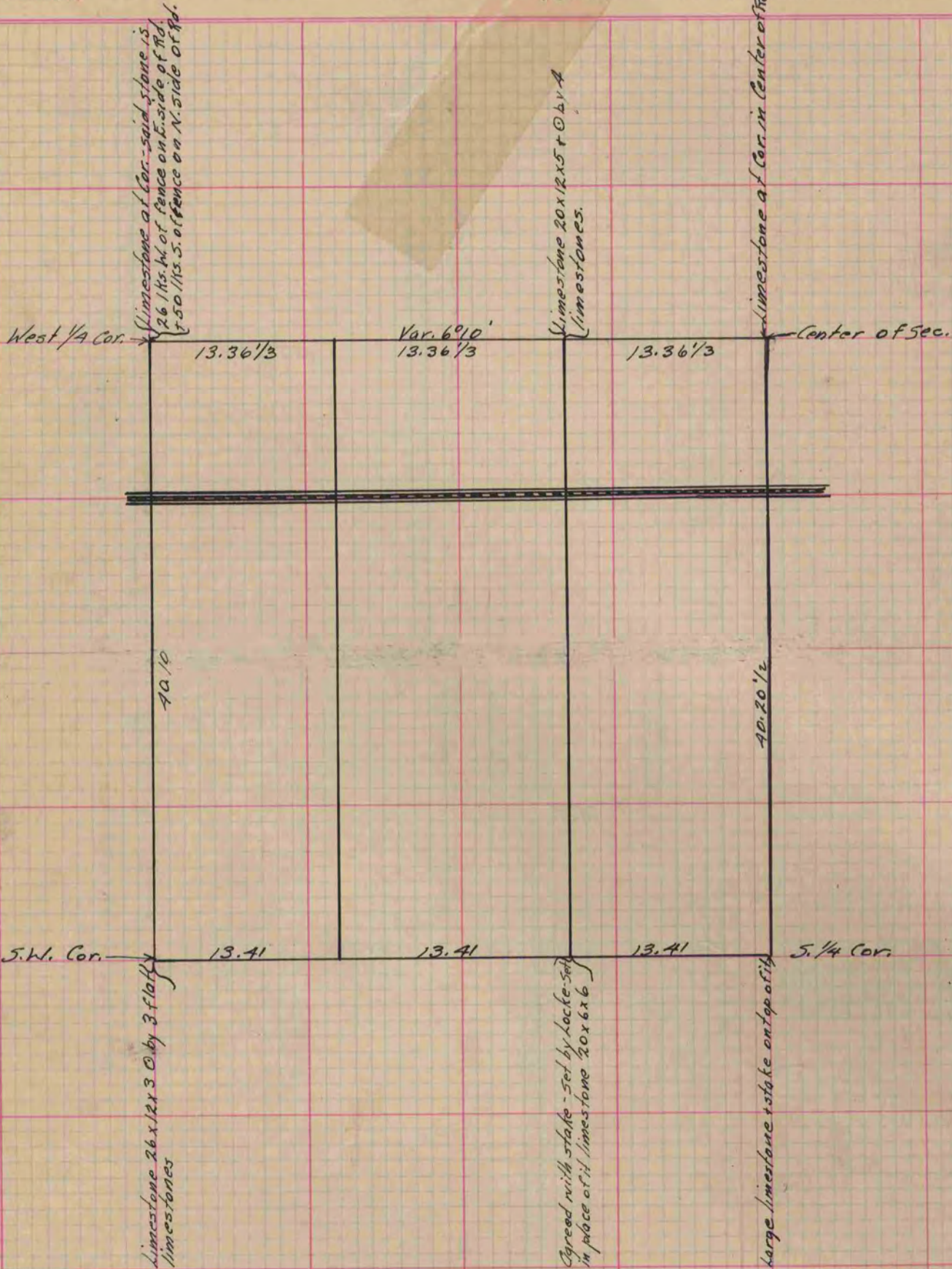
Of a Survey on Section ^{sw/4} 35 T 3 R 12 E. of the 4 P. M. in Janesville Township
 Rock County, Wisconsin, made July the 1849 1873

I hereby certify that the following is a correct record, said survey as made by me.

COUNTY BUILDING
 IN CITY OF BELOIT

(Signed) Edward Ruger

County Surveyor.



Copied from Page 66 Vol. 2 Original County Surveyor's Record.