

PLAT AND RECORD

Of a Survey on Section 15 T 4 R 12 E. of the 4 P. M. in Fulton Township

Rock County, Wisconsin, made October the 7th & 8th 1872

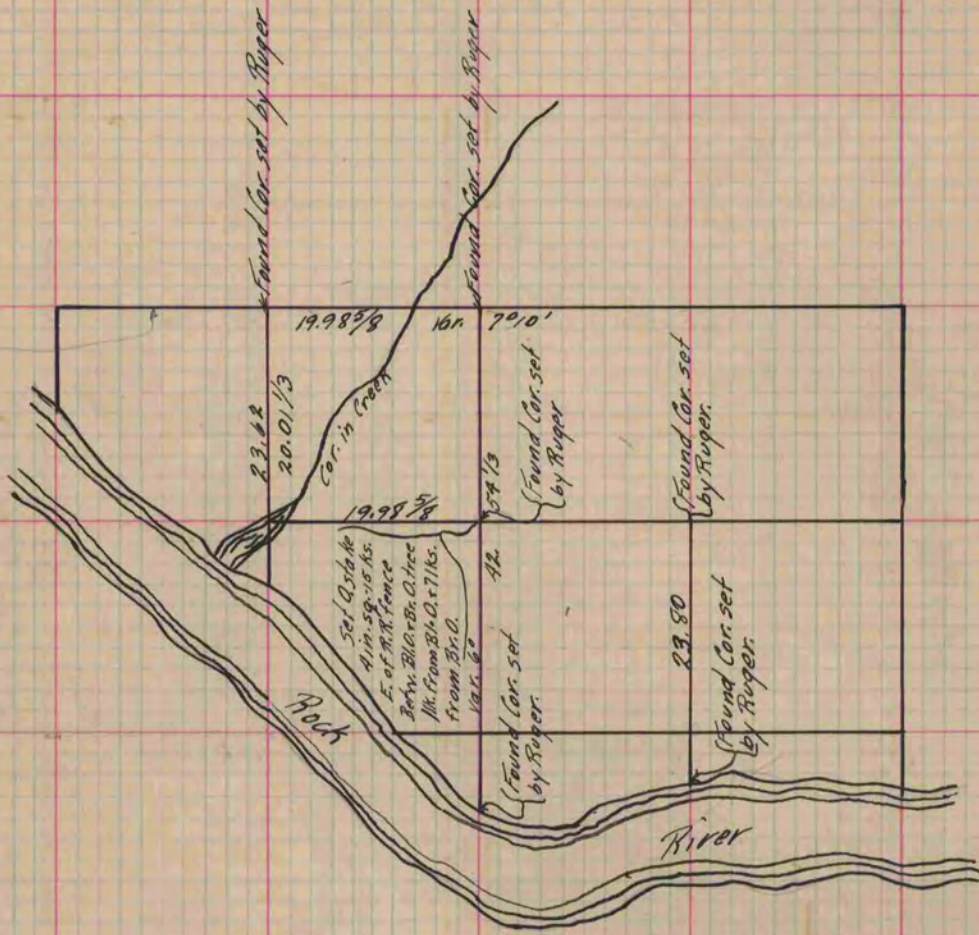
I hereby certify that the following is a correct record of said survey as made by me.

COUNTY BUILDING
IN CITY OF BELOIT

(Signed) R. K. Lee
RMB

{ Deputy
County Surveyor.

G.P. = $\frac{79.40}{4} = 19.85$



Copied from Page 53 Vol. 2 Original County Surveyor's Record.