

PLAT AND RECORD

287

Of a Survey on Section 35 T 3 R 12 E. of the 4 P. M. in Janesville Township

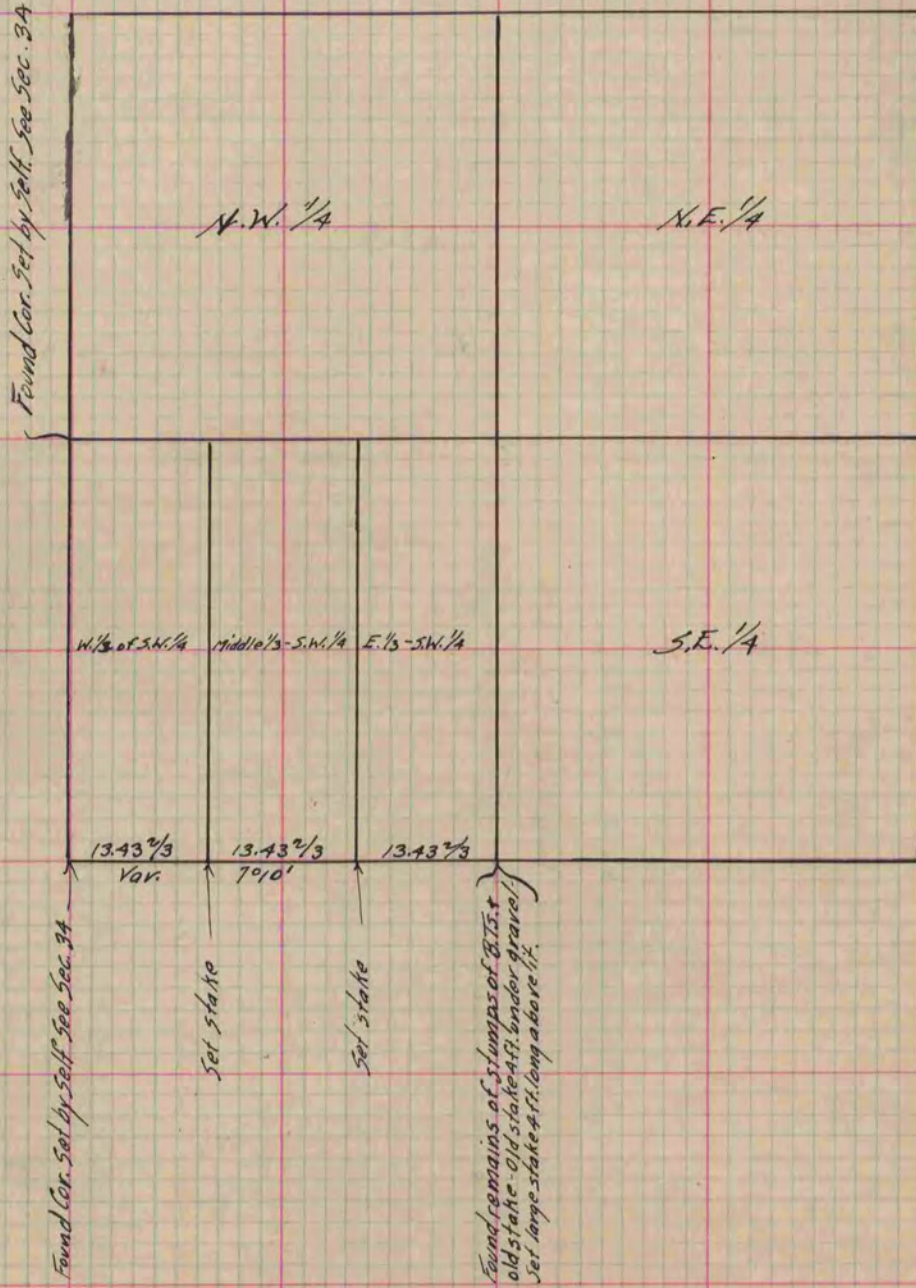
Rock County, Wisconsin, made June the 3 1867

I hereby certify that the following is a correct record of said survey as made by me.

COUNTY BUILDING
IN CITY OF БЕЛОIT

(Signed) S. D. Locke
RMG

County Surveyor.



Copied from Page 248 Vol. 1. Original County Surveyor's Record.