

PLAT AND RECORD

Of a Survey on Section 9 T 2 R 11 E. of the 4 P. M. in Plymouth Township

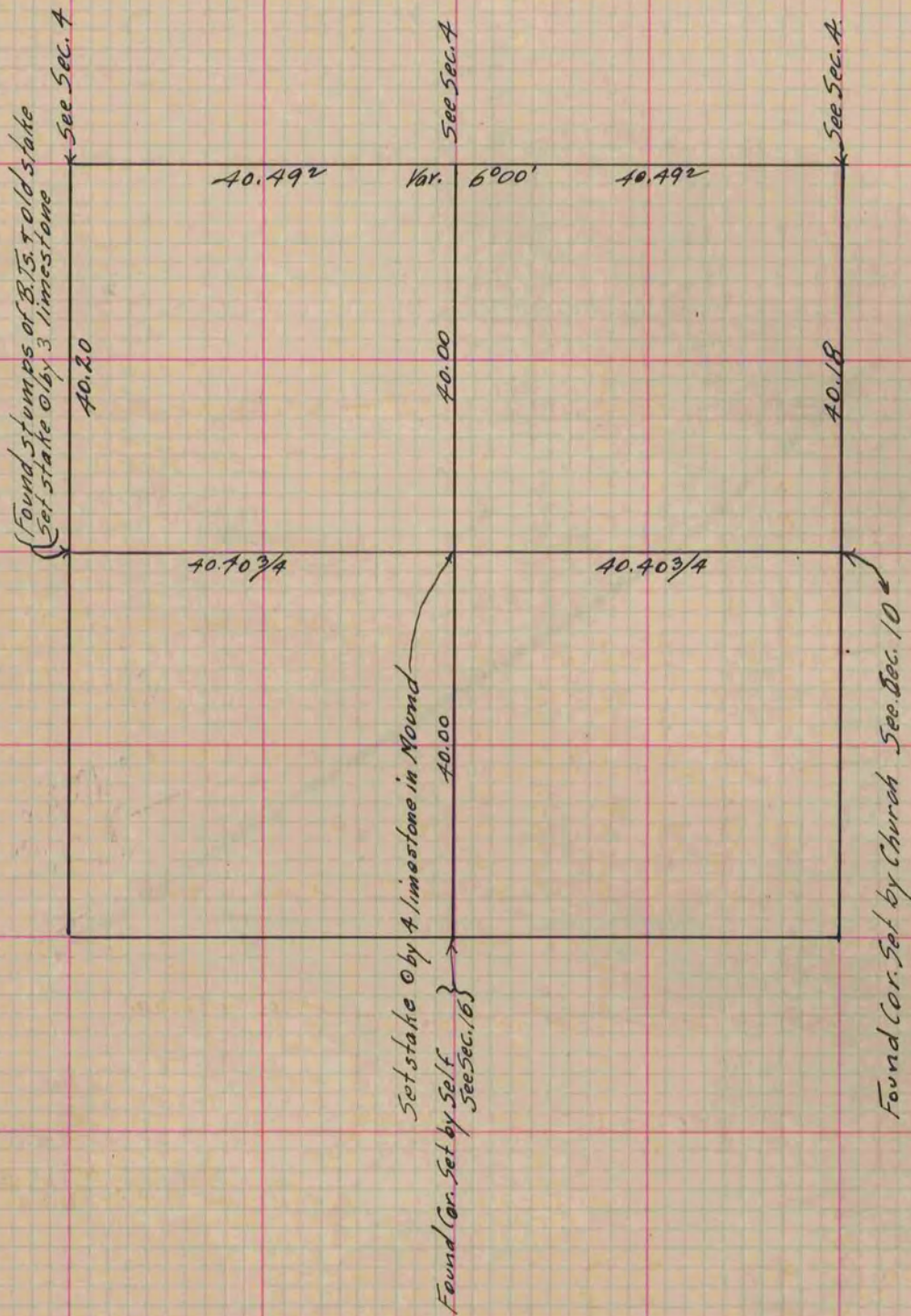
Rock County, Wisconsin, made Dec. the 20th 1866

I hereby certify that the following is a correct record of said survey as made by me.

COUNTY BUILDING
IN CITY OF БЕЛОIT

(Signed) S. D. Locke.
SMB

County Surveyor.



Copied from Page 243 Vol. 1. Original County Surveyor's Record.