

# PLAT AND RECORD

187

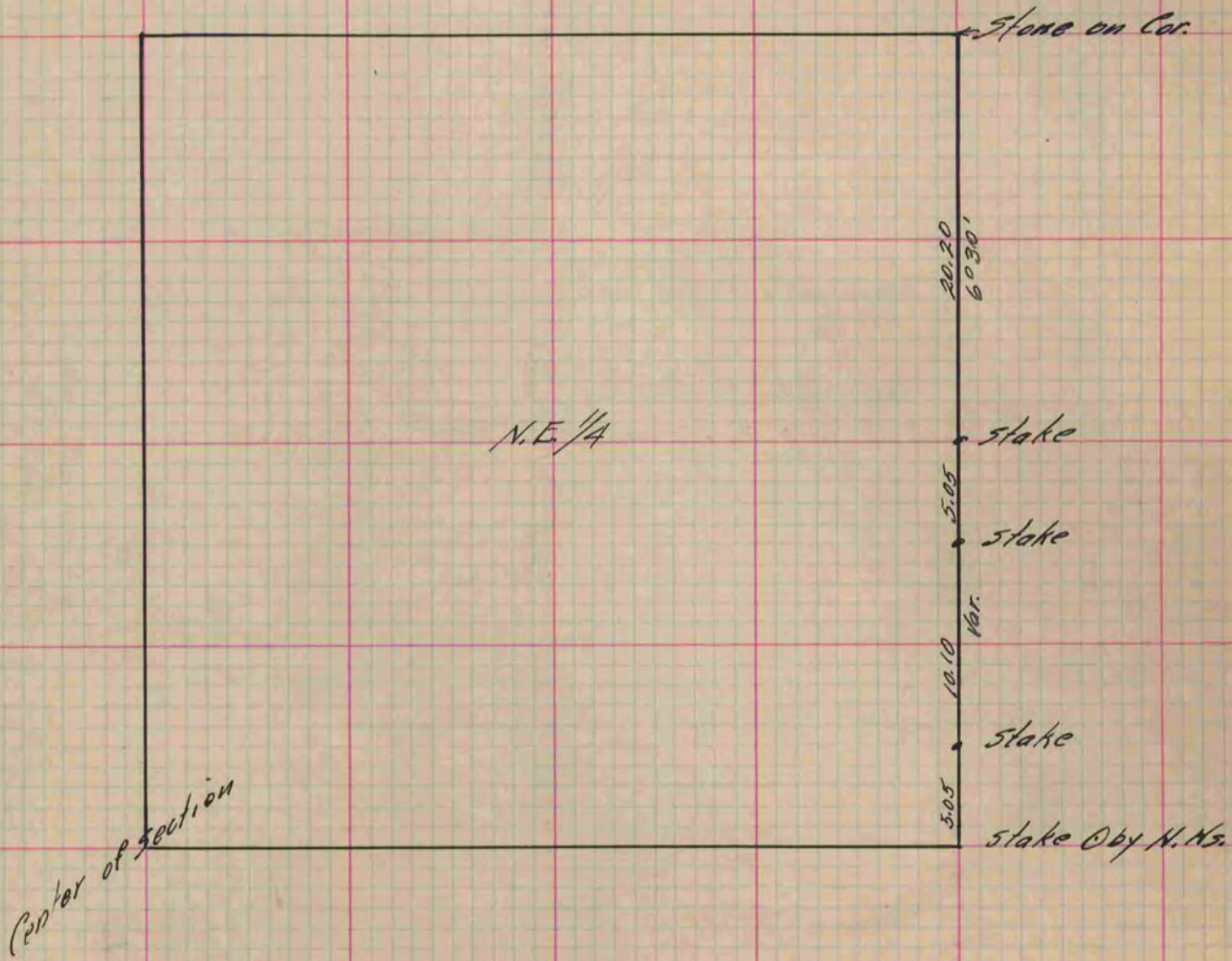
Of a Survey on <sup>NE 1/4</sup> Section 22 T 3 R 12 E. of the 4 P. M. in Sonsville Township  
Rock County, Wisconsin, made December the 13 1875

I hereby certify that the following is a correct record of said survey as made by me.

COUNTY BUILDING  
IN CITY OF BELOIT

(Signed) Edward Ruyer  
ER

County Surveyor.



Copied from P. 142 Vol. 2 Original County Surveyor's Record.