

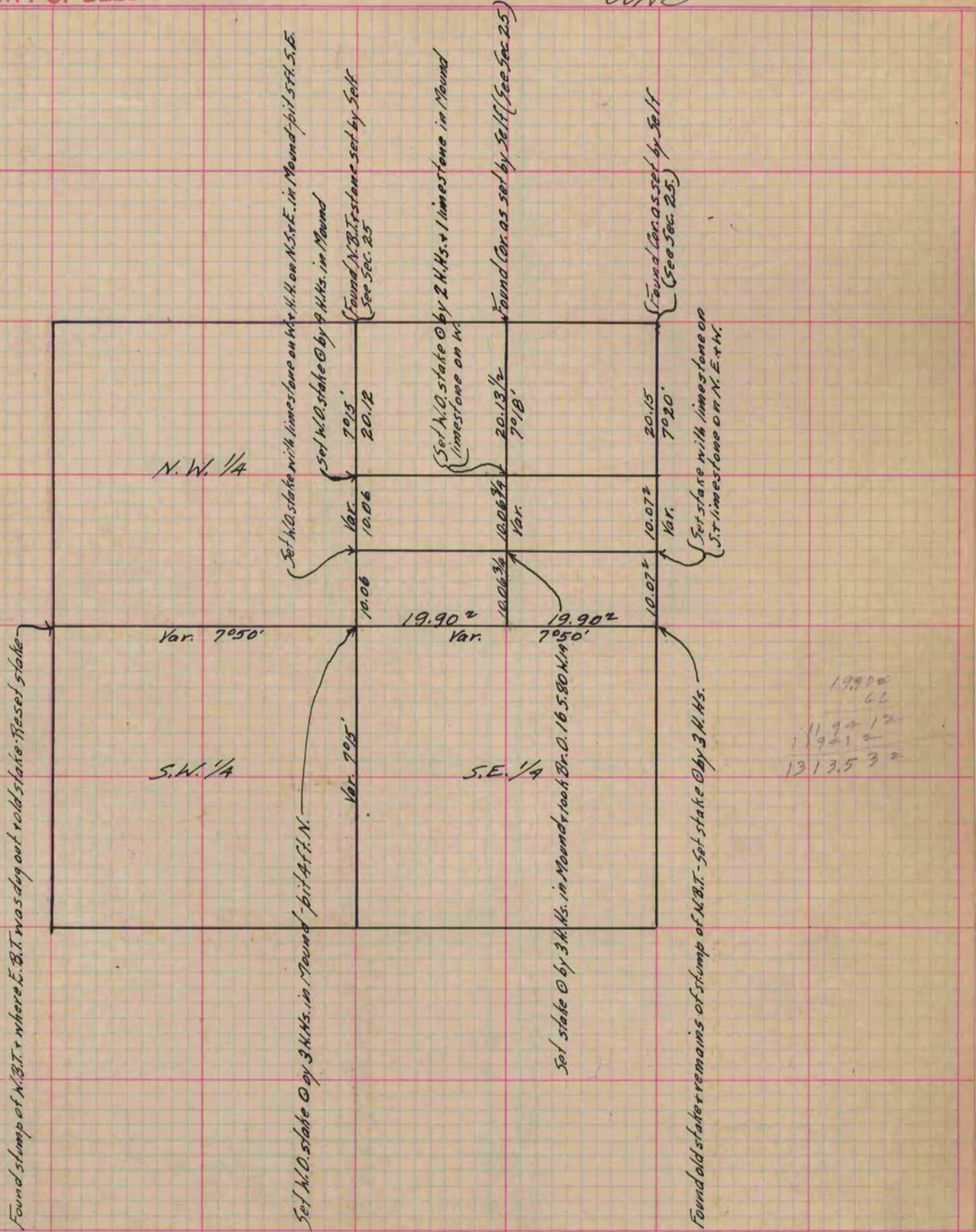
PLAT AND RECORD

Of a Survey on Section 36 T 4 R 12 E. of the 4 P. M. in Fulton Township
Rock County, Wisconsin, made October the 24 1867

I hereby certify that the following is a correct record of said survey as made by me.

COUNTY BUILDING
IN CITY OF БЕЛОIT

(Signed) (Signed) S. D. Locke
County Surveyor.



Copied from Page 253 Vol. 1. Original County Surveyor's Record.