

# PLAT AND RECORD

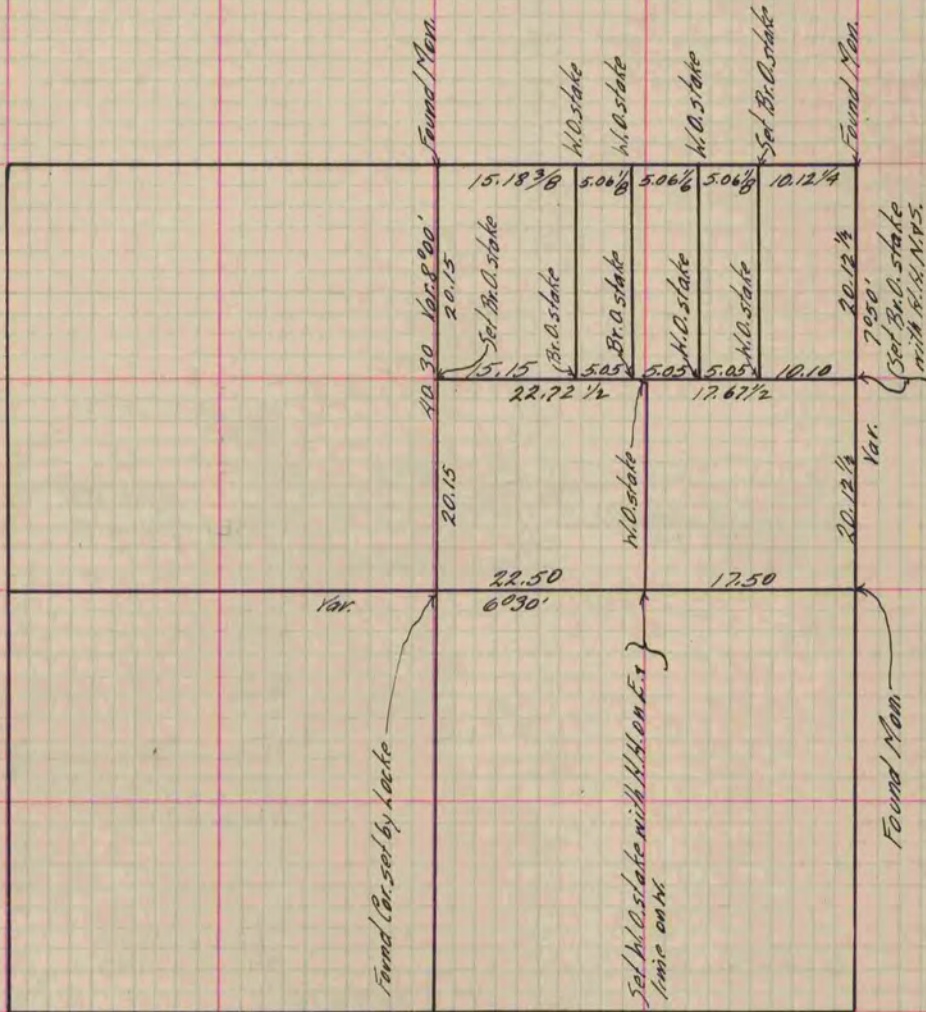
Of a Survey on Section 20 T 2 R 11 E. of the 4 P. M. in Plymouth Township  
Rock County, Wisconsin, made October the 22<sup>nd</sup> 1869

I hereby certify that the following is a correct record of said survey as made by me.

COUNTY BUILDING  
IN CITY OF BELoit

(Signed) R. K. Lee  
RKL

CHAS. J. ...  
Dep. County Surveyor.



Copied from P. 287 Vol. 1 County Surveyor's Record.  
And this completes Vol. 1 in full — End of Volume One Original  
— Record —