

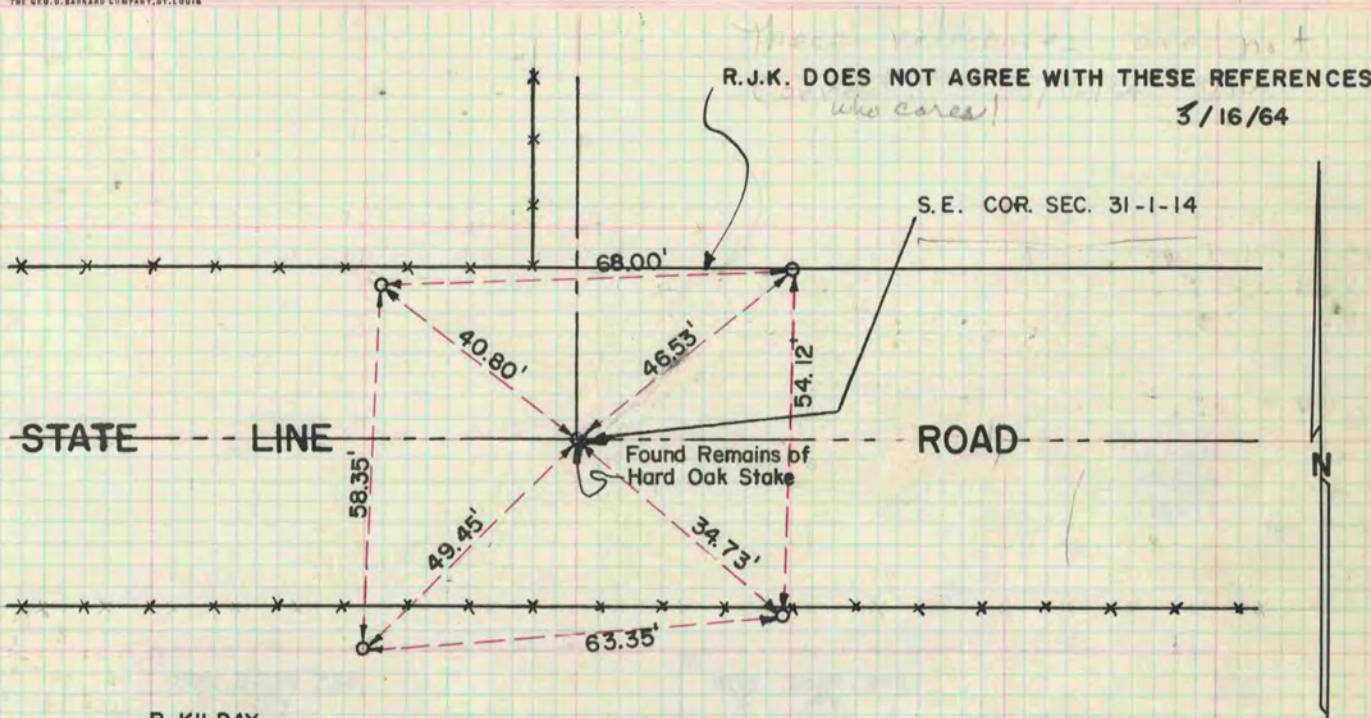
PLAT AND RECORD

Of a Survey on Section 31 T 1 R 14 E. of the 4 P. M. in CLINTON Township
Rock County, Wisconsin, made AUGUST the 3rd. 1961

I hereby certify that the following is a correct record of said survey as made by me.

COUNTY BUILDING
IN CITY OF БЕЛОIT

R. J. Kilday
County Surveyor.



R. KILDAY
T. KERWIN

