

# PLAT AND RECORD

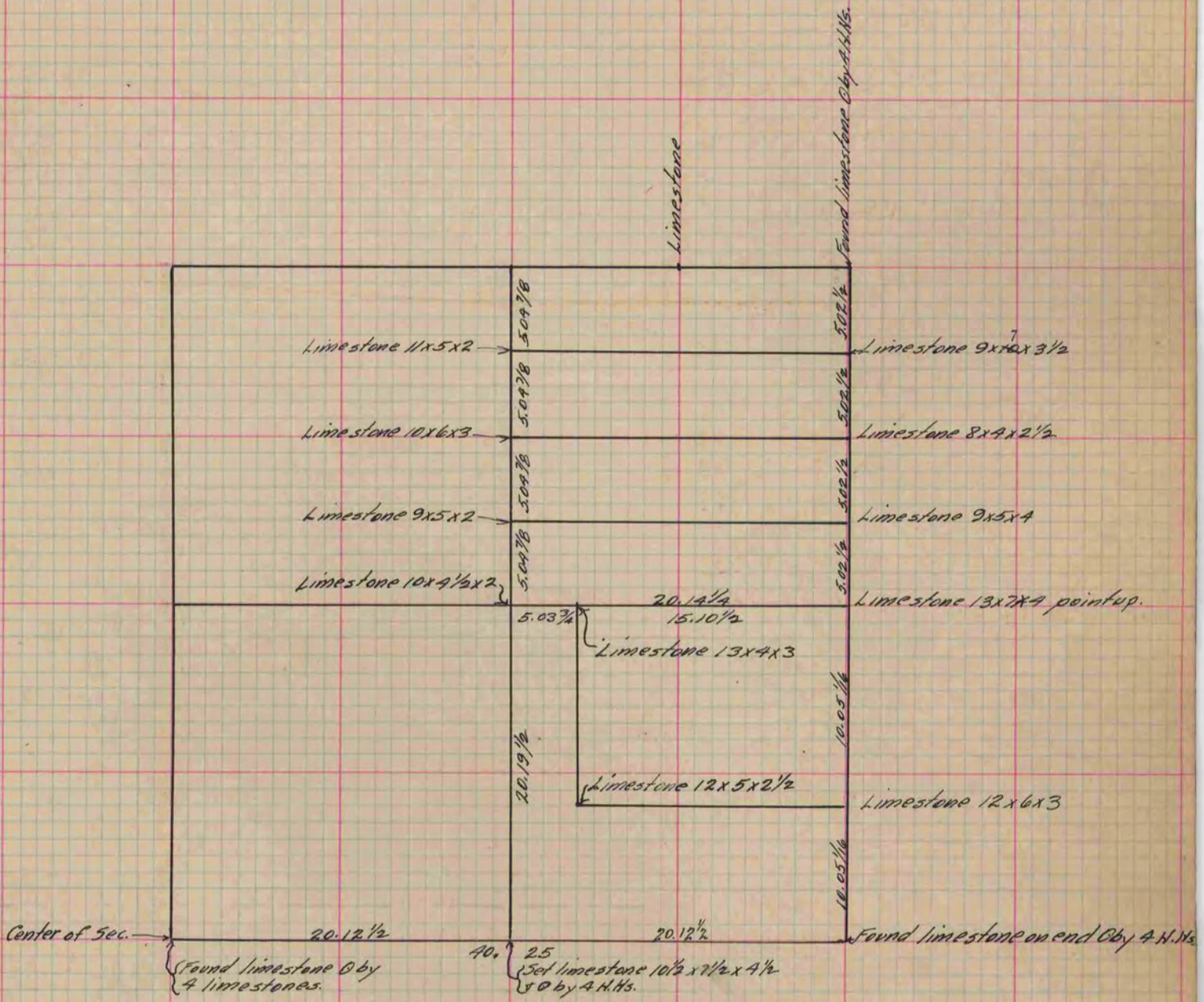
Of a Survey on <sup>NE 1/4</sup> Section 34 T 3 R 12 E. of the 4 P. M. in Janesville Township  
 Rock County, Wisconsin, made March the 31<sup>st</sup> 1882

I hereby certify that the following is a correct record of said survey as made by me.

COUNTY BUILDING  
 IN CITY OF BELOIT

(Signed) Edward Reger  
*ER*

County Surveyor.



Copied from P. 319 Vol. 2 County Surveyor's Record.