

PLAT AND RECORD

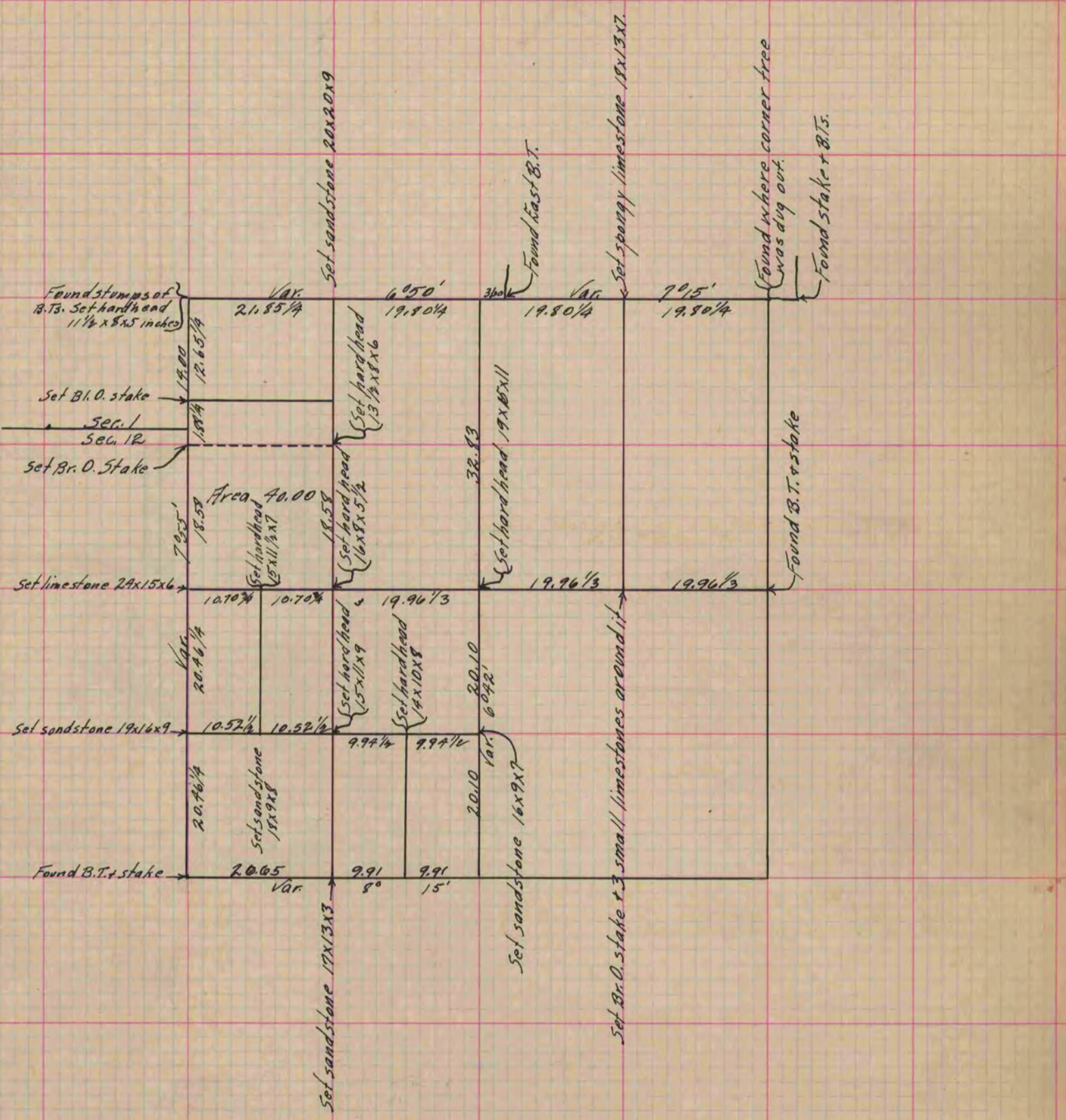
Of a Survey on Section 6 T 3 R 10 E. of the 4 P. M. in Magnolia Township
Rock County, Wisconsin, made April the 21st + 22nd 1897

I hereby certify that the following is a correct record of said survey as made by me.

COUNTY BUILDING
IN CITY OF BELOIT

(Signed) Sylvanus D. Locke
SD Locke

County Surveyor.



Copied from Upper 1/2 of page 203 Vol. 1. Original County Surveyor's Record.