

# PLAT AND RECORD

Of a Survey on Section 35 & 36 T 2 R 12 E. of the 4 P. M. in Rock Township

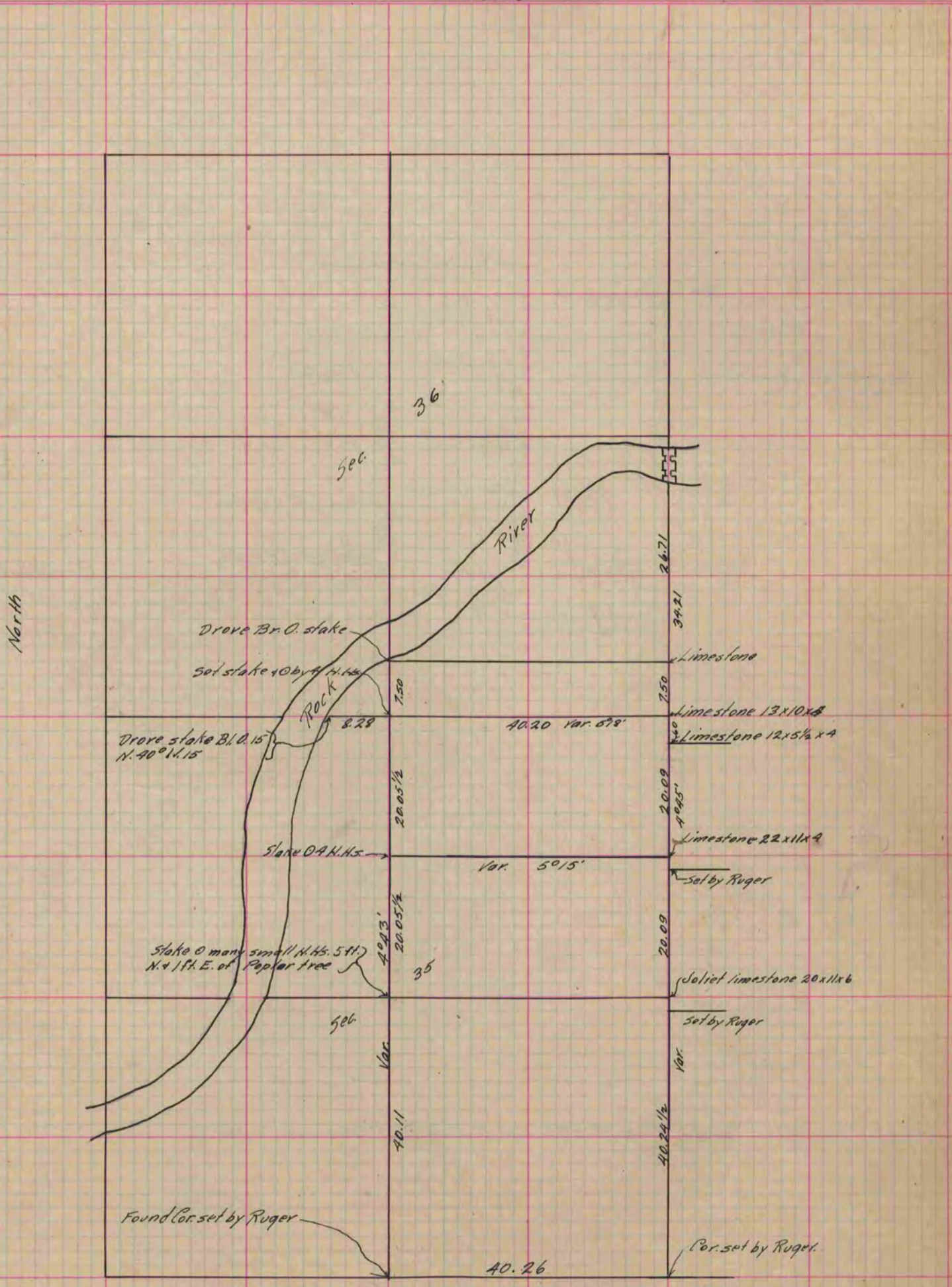
Rock County, Wisconsin, made April the 8 1891

I hereby certify that the following is a correct record of said survey as made by me.

COUNTY BUILDING  
IN CITY OF BELOIT

(Signed) G. Bleedorn  
GMB

Dep.  
County Surveyor.



Copied from P. 354 Vol. 2 County Surveyors Record.