

PLAT AND RECORD

Of a Survey on Section 18 T 4 R 12 E. of the 4 P. M. in Fulton Township

Rock County, Wisconsin, made May the 18+19th 1882

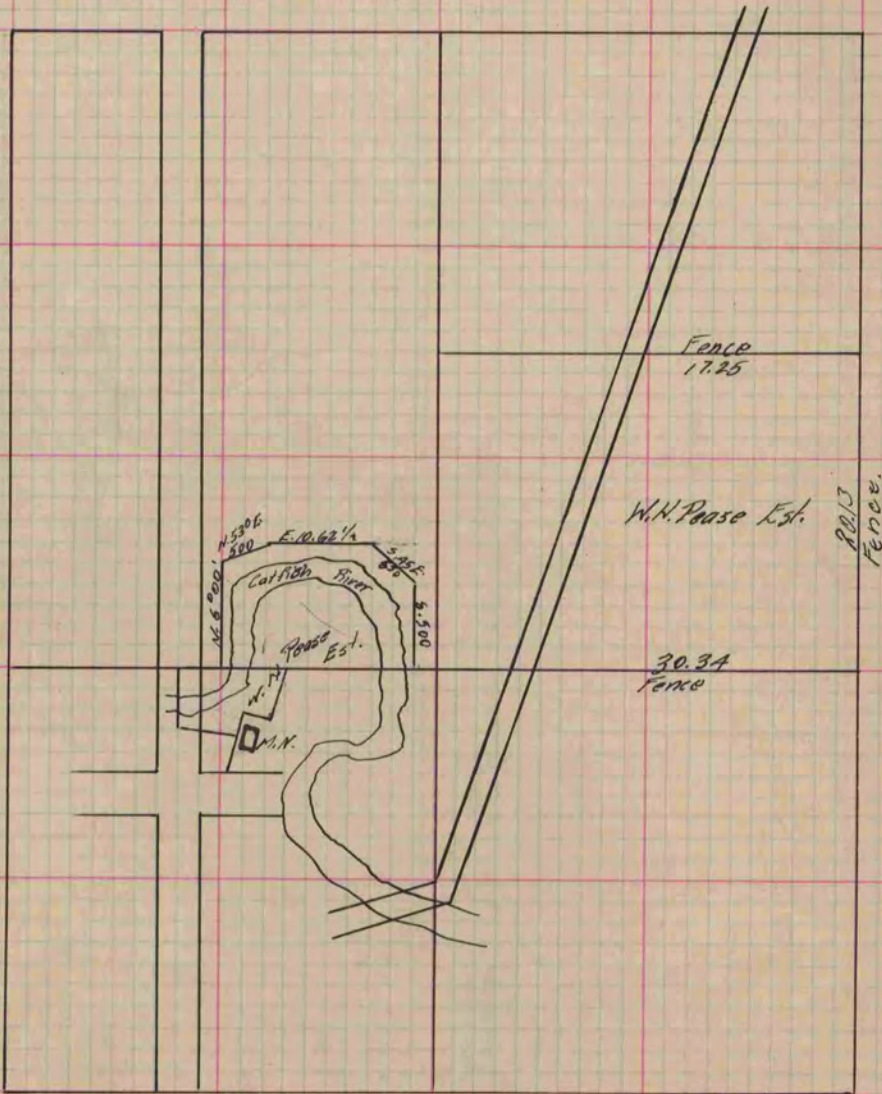
I hereby certify that the following is a correct record of said survey as made by me.

COUNTY BUILDING
IN CITY OF BELOIT

(Signed) R. K. Lee
RKL

Dep. County Surveyor.

To determine Area of Pease Estate.
A plat was furnished the administrator D. F. Sayre.



Copied from P. 209 Vol. 2 County Surveyor's Record.