

PLAT AND RECORD

PG 277.

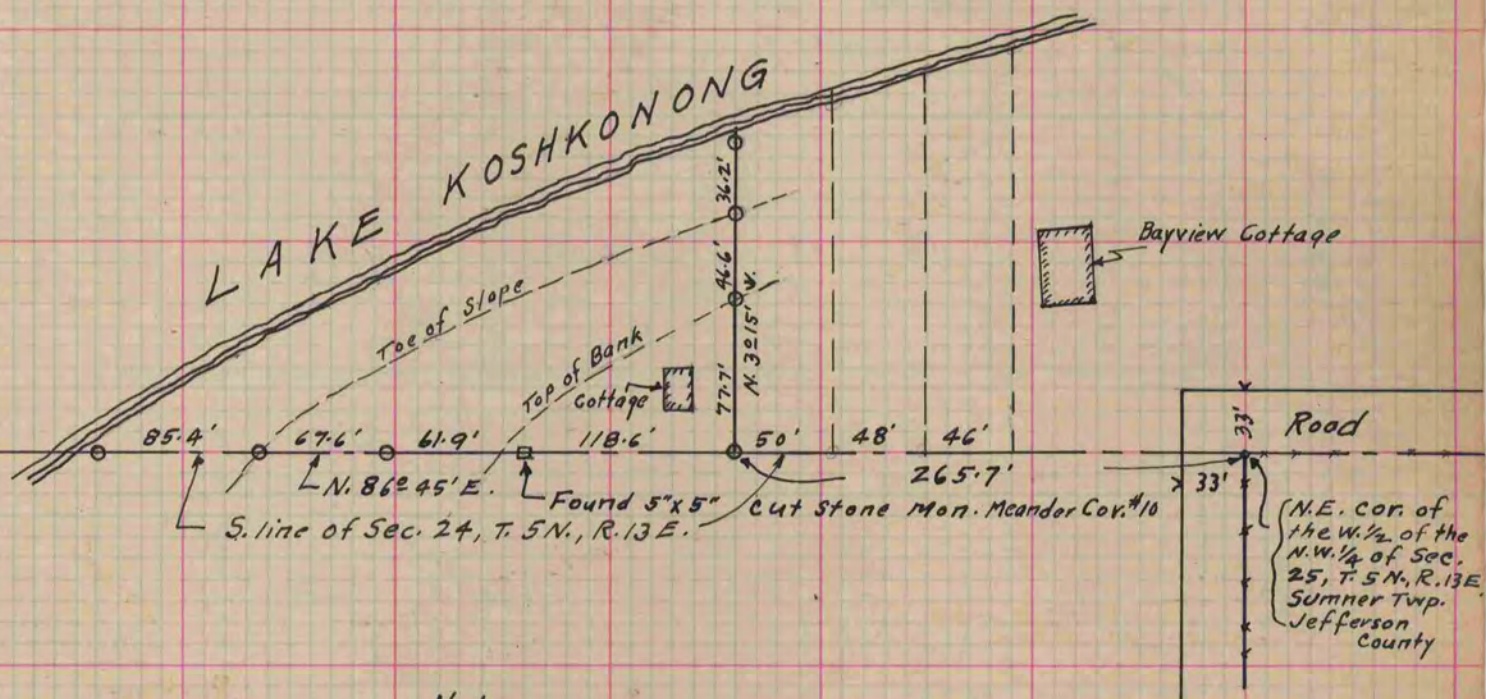
JANESVILLE REC
12/15/75 DAB

Of a Survey on Section 24 T 5N. R 13 E. of the 4 P. M. in Sumner Township
Rock County, Wisconsin, made Oct. & Nov. the Jefferson County
1935.

I hereby certify that the following is a correct record of said survey as made by me.

COUNTY BUILDING
IN CITY OF БЕЛОIT

B. J. Bunn
County Surveyor.



Note:
Circles indicate iron pipe
Mon. set by me.