

PLAT AND RECORD

263

Of a Survey on Section 22 T 4 R 14 E. of the 4 P. M. in Lima Township

Rock County, Wisconsin, made July the 12th 1866

I hereby certify that the following is a correct record of said survey as made by me.

COUNTY BUILDING
IN CITY OF BELOIT

(Signed) S. D. Locke
S. D. Locke

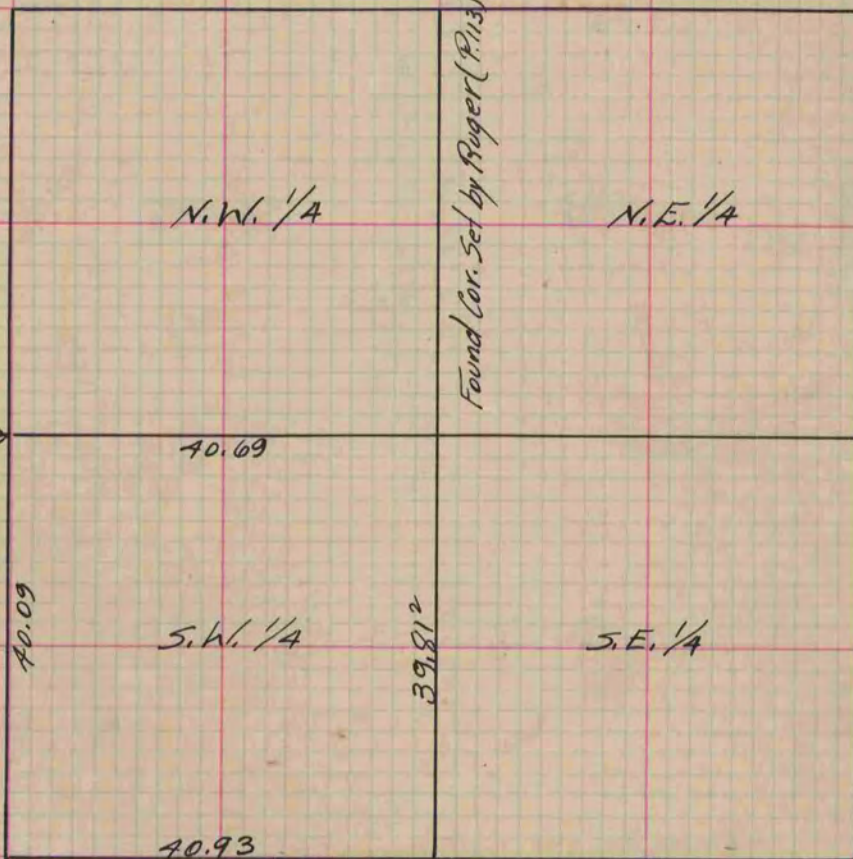
County Surveyor.

Found Cor. Set by Ruger (P. 113) 109 this Book.

Found Cor. Set by Ruger (P. 113) (109 this book.)

Found S. B. T. Stake set
Stake with hard head on E. W.

Found Cor. Set by Ruger
(P. 113)
(109 this Book)



Copied from Page 235 Vol. Original County Surveyor's Record.