

PLAT AND RECORD

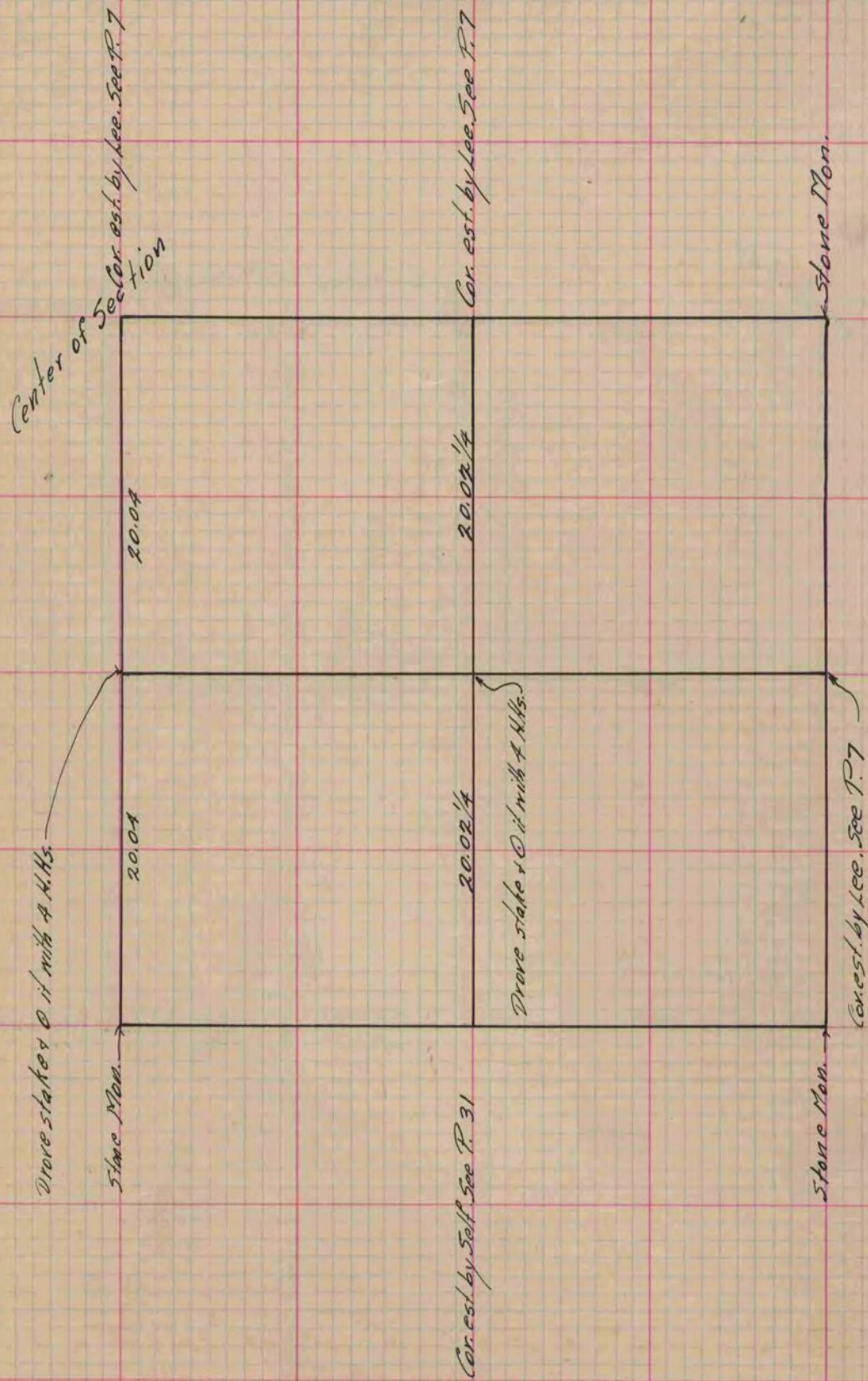
Of a Survey on Section $W\frac{1}{2}, S.E.\frac{1}{4}$ T 2 R 11 E. of the 4 P. M. in Plymouth Township

Rock County, Wisconsin, made May the 20 1874

I hereby certify that the following is a correct record of said survey as made by me.

COUNTY BUILDING
IN CITY OF BELOIT

(Signed) Edward Roger
RMB County Surveyor.



Copied from P. 95 Vol. 2 Original County Surveyor's Record.