

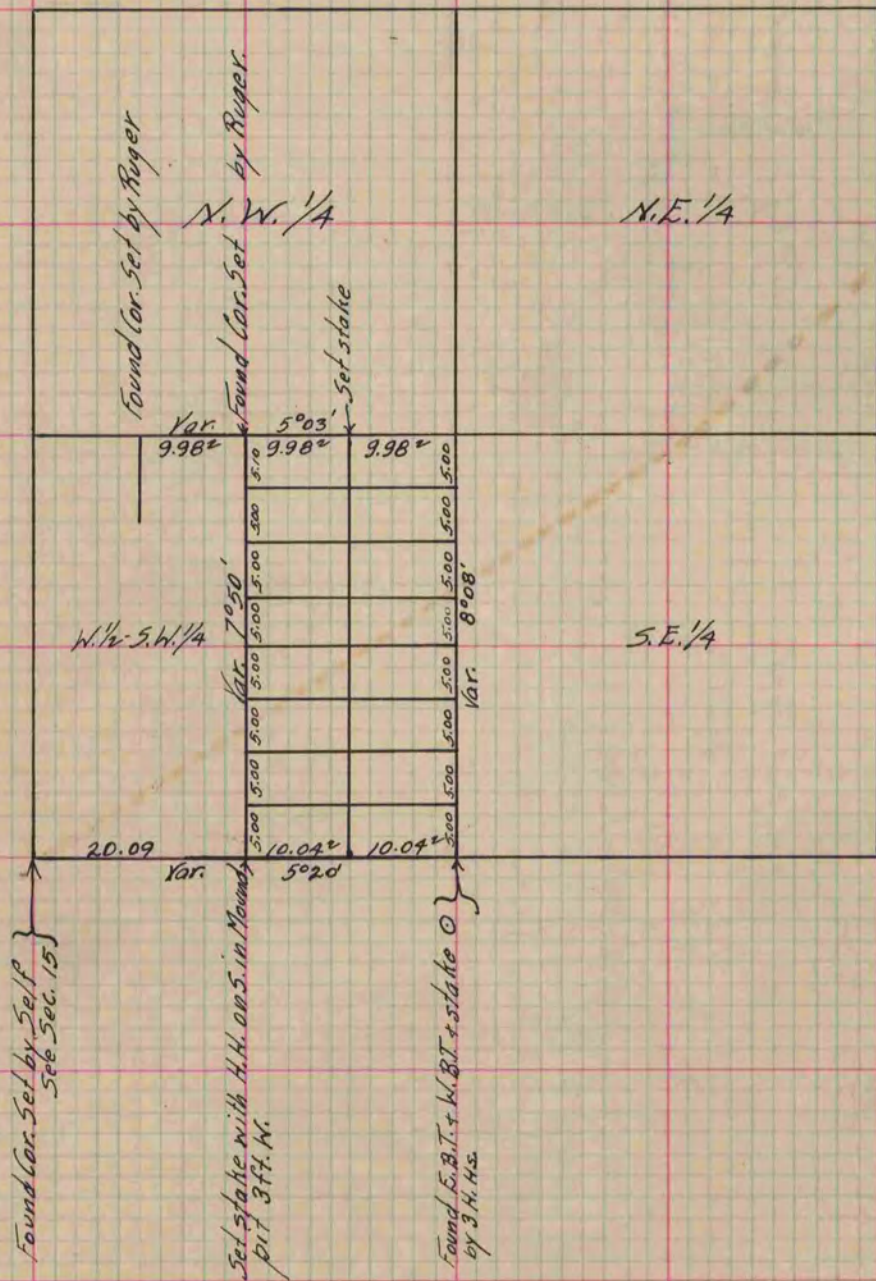
# PLAT AND RECORD

Of a Survey on Section 14 T 3 R 13 E. of the 4 P. M. in Harmony Township  
Rock County, Wisconsin, made December the 21 + 22 1866

I hereby certify that the following is a correct record of said survey as made by me.

COUNTY BUILDING  
IN CITY OF BELOIT

(Signed) S. D. Locke  
RMS County Surveyor.



Copied from Page 242 Vol. 1. Original County Surveyor's Record.