

PLAT AND RECORD

Of a Survey on Section 31 T 4 R 12 E. of the 4 P. M. in Fulton Township

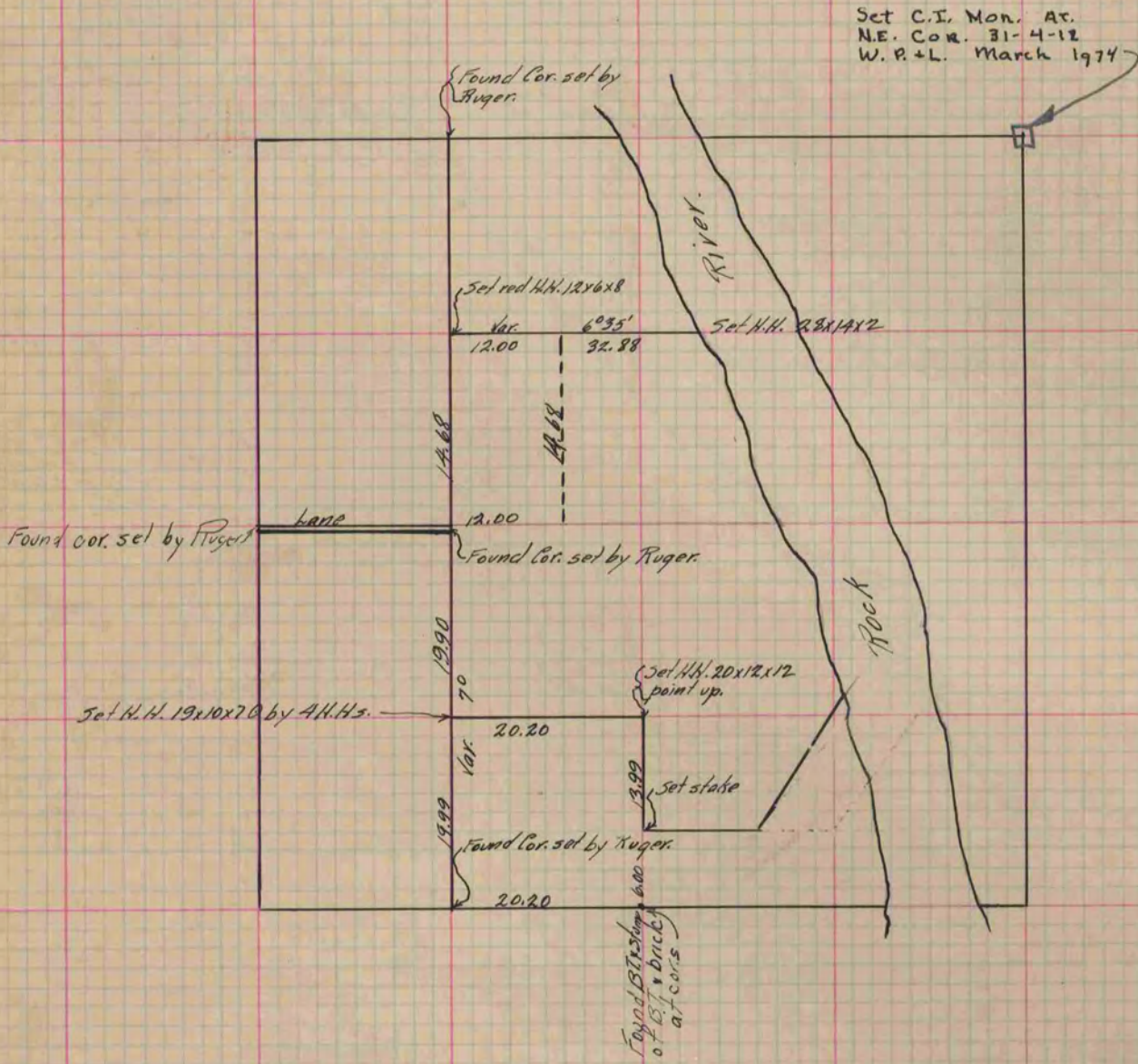
Rock County, Wisconsin, made November the 26th & 27th 1883

I hereby certify that the following is a correct record of said survey as made by me.

COUNTY BUILDING
IN CITY OF БЕЛОIT

(Signed) R. K. Lee
RKL

Dept. County Surveyor.



Copied from P. 293 Vol. 2 County Surveyor's Record