

# PLAT AND RECORD

289675  
13 20 25  
40 d 7 00

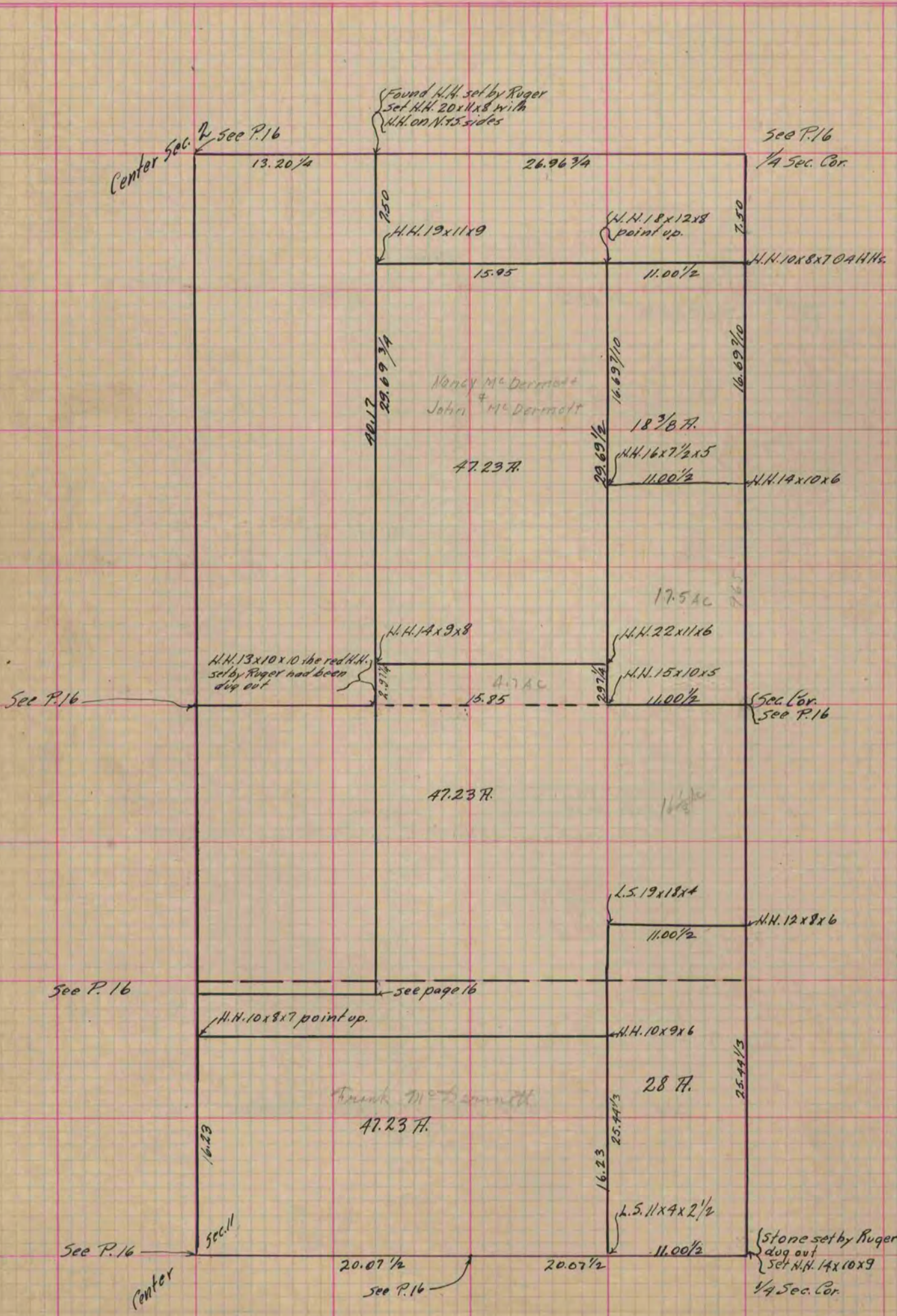
Of a Survey on Sections 2 & 11 T 3 R 12 E. of the 4 P. M. in Janesville Township

Rock County, Wisconsin, made May the 29 1890

COUNTY BUILDING  
IN CITY OF БЕЛОIT

I hereby certify that the following is a correct record of said survey as made by me.

(Signed) O. G. Bleedorn  
O. G. B. Dep. County Surveyor.



Copied From Page 351 Vol. 2 County Surveyor's Record.