

# PLAT AND RECORD

Of a Survey on Section 16 & 17 T 5 R 13 E. of the 4 P. M. in \_\_\_\_\_ Township

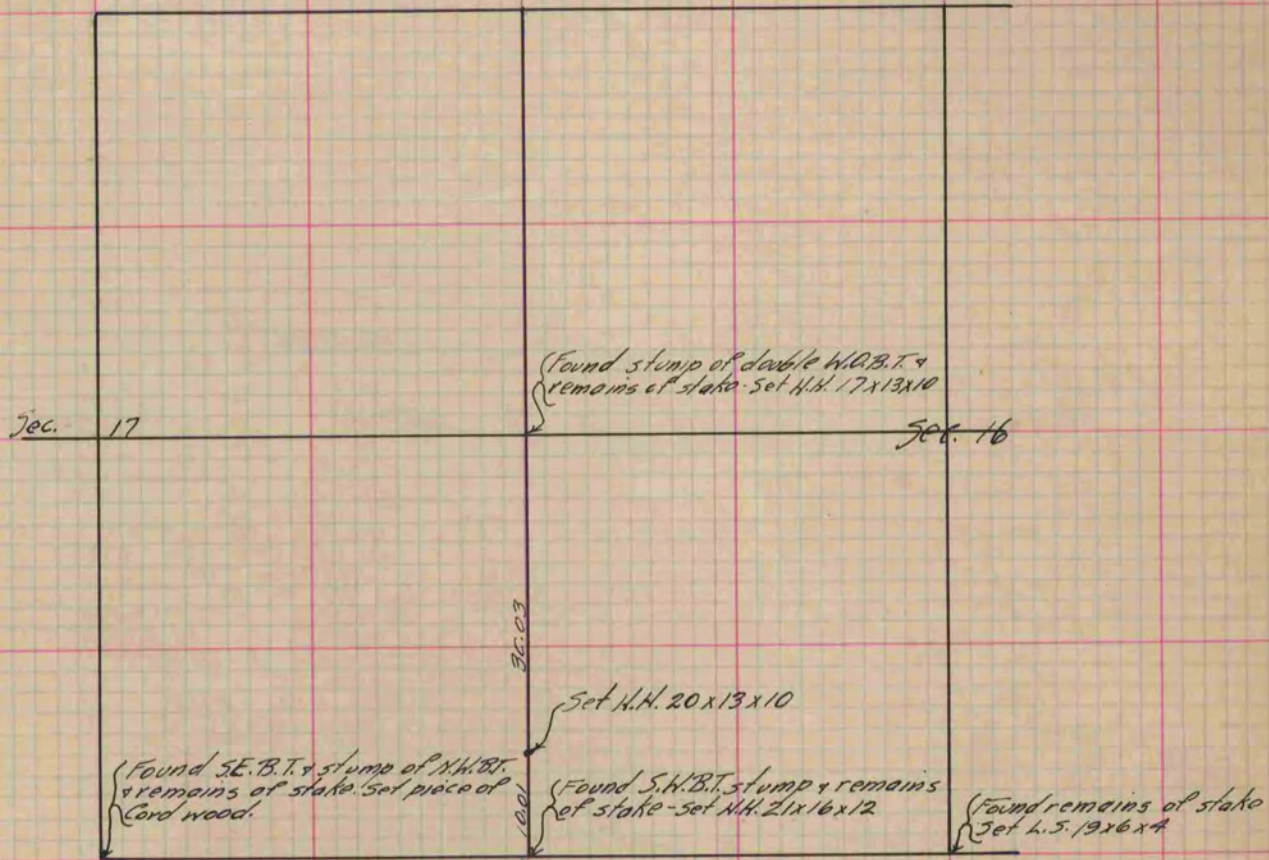
Rock County, Wisconsin, made Aug 31 & Sept the 1 1893

I hereby certify that the following is a correct record of said survey as made by me.

COUNTY BUILDING  
IN CITY OF BELOIT

Signed) O.G. Bleedorn  
O.G.B.

County Surveyor.



*Copied From P. 313 Vol. 2 County Surveyor's Record.*