

# PLAT AND RECORD

Of a Survey on Section 17 T 3 R 12 E. of the 4 P. M. in JANESVILLE Township  
Rock County, Wisconsin, made the 19 65

I hereby certify that the following is a correct record of said survey as made by me.

COUNTY BUILDING  
IN CITY OF БЕЛОIT

*R. B. Atkinson*

County Surveyor.

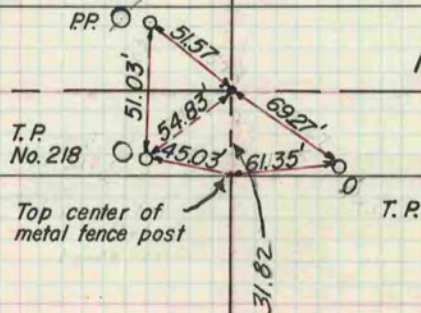
THE GEO. B. BARBARO COMPANY, ST. LOUIS

H. Combs  
M. Hoff

6-11-64  
Found R.R. Spike at the  
N. 1/4 Cor. Sec. 17-3-12  
set by C. Shimeall

U.S. HIGHWAY

NO. 14



# 17

DUG LARGE HOLE  
20' x 15' x 3' AT  
W. 1/4 COR.  
FOUND NOTHING

8-25-65

H. COMBS  
G. HANSON

Pin at S. 1/4 Cor.

See page 98

See page 70