

PLAT AND RECORD

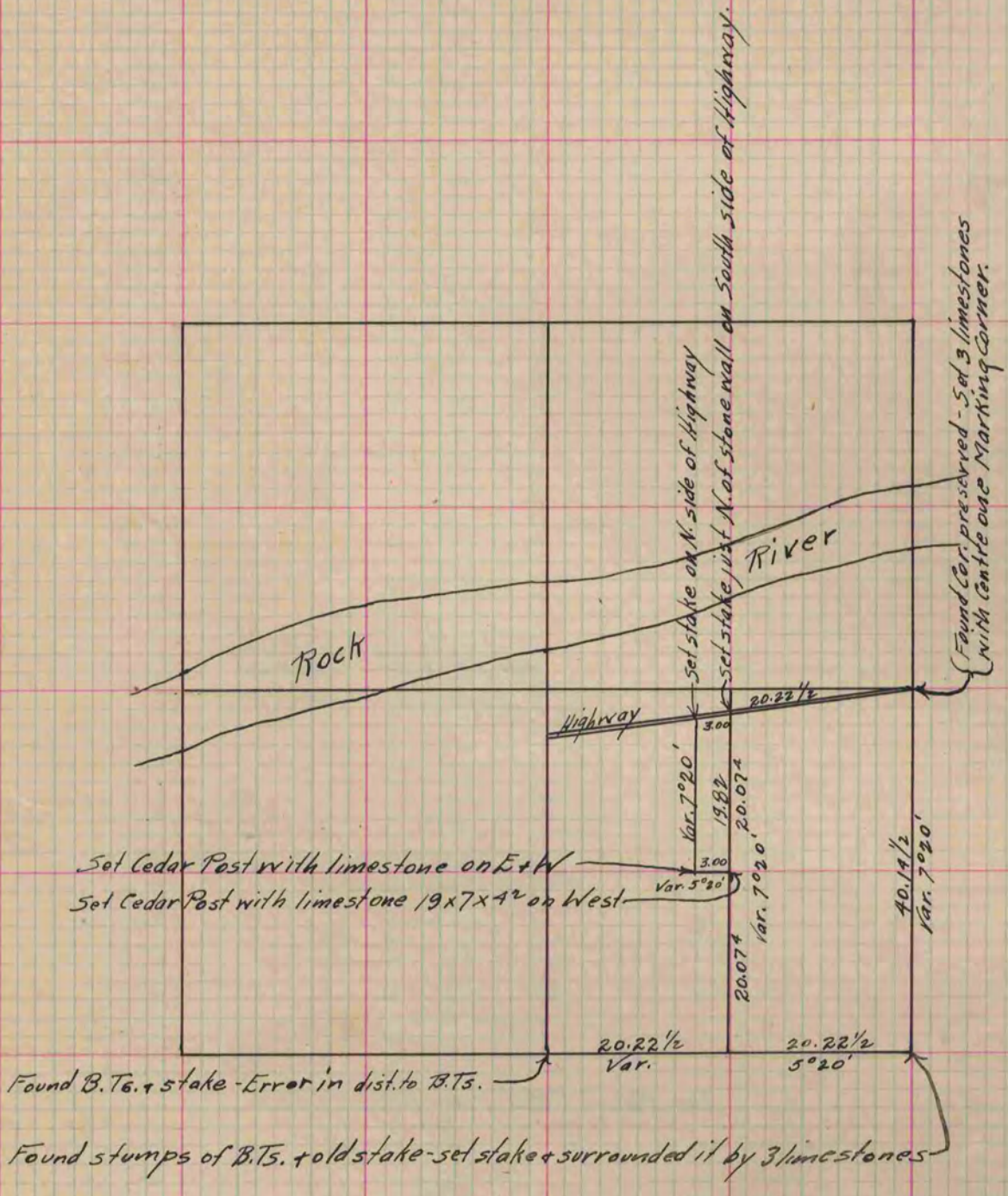
Of a Survey on Section 2 T 2 R 12 E. of the 4 P. M. in Rock Township
Rock County, Wisconsin, made October the 27th 1865

I hereby certify that the following is a correct record of said survey as made by me.

COUNTY BUILDING
IN CITY OF BELOIT

(Signed) S. D. Locke.
S.D.L.

County Surveyor.



Set Cedar Post with limestone on E+W
Set Cedar Post with limestone 19x7x4 1/2 on West

Found B.T. + stake - Error in dist. to B.T.

Found stumps of B.T.s. + old stake - set stake + surrounded it by 3 limestones

see Page 245

Copied from Page 225 Vol. 1. Original County Surveyor's Record.