

PLAT AND RECORD

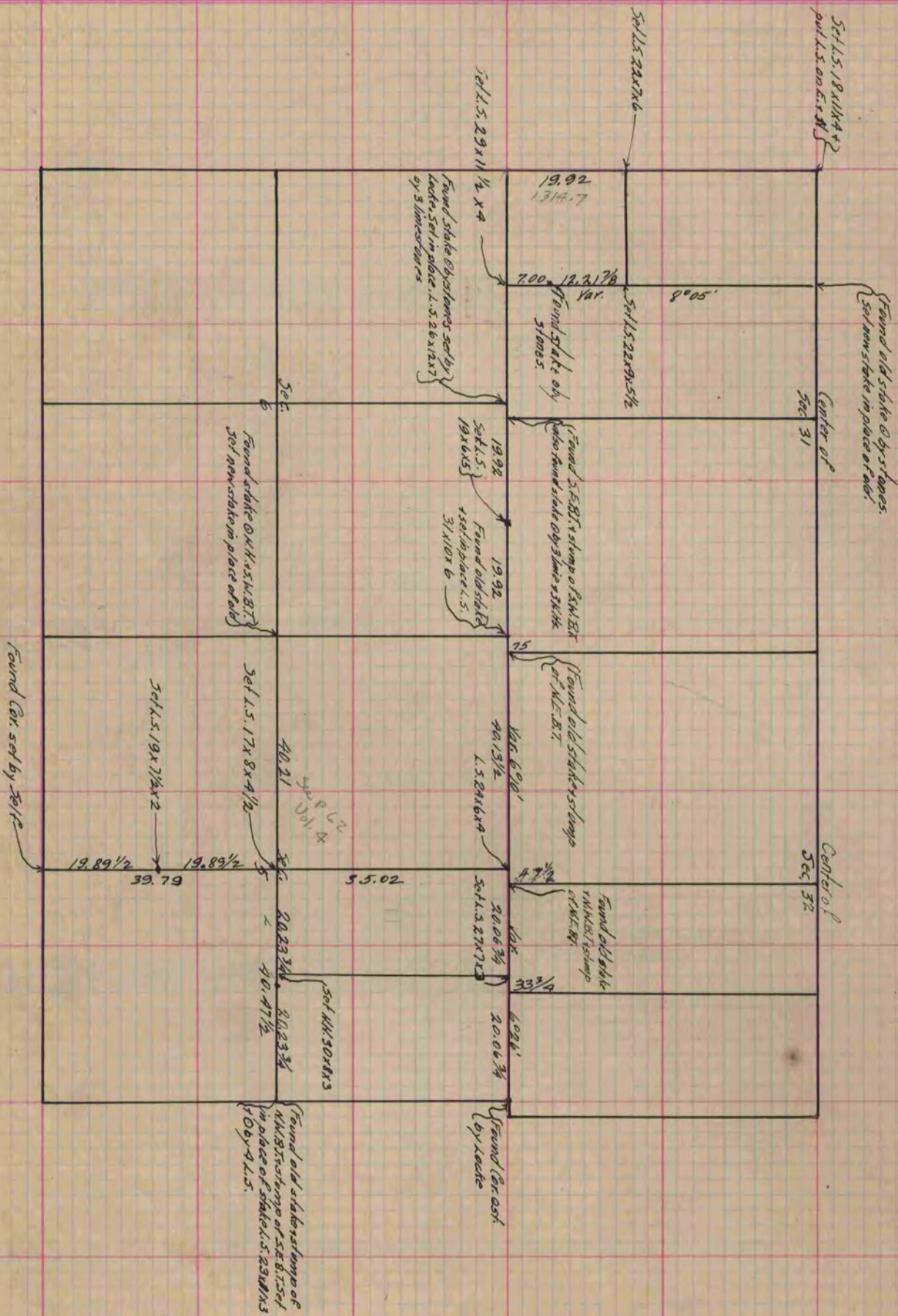
Of a Survey on Section 5 & 6 T 2 R 10 E. of the 4 P. M. in *Spring Valley* Township
 + " 31432 T 3 R 10 *Magnolia*
 Rock County, Wisconsin, made Dec. the 19th 1882

I hereby certify that the following is a correct record of said survey as made by me.

COUNTY BUILDING
 IN CITY OF БЕЛОИТ

(Signed) *Edward Ruger*

County Surveyor.



See P. 329 & 289 of this Book + P. 257 of Bk. 1
 Copied from P. 332 Vol. 2 County Surveyor's Record