

PLAT AND RECORD

416
See other side
for P. 415.

Of a Survey on Section 25 T 3 R 14 E. of the 4 P. M. in Johnstown Township

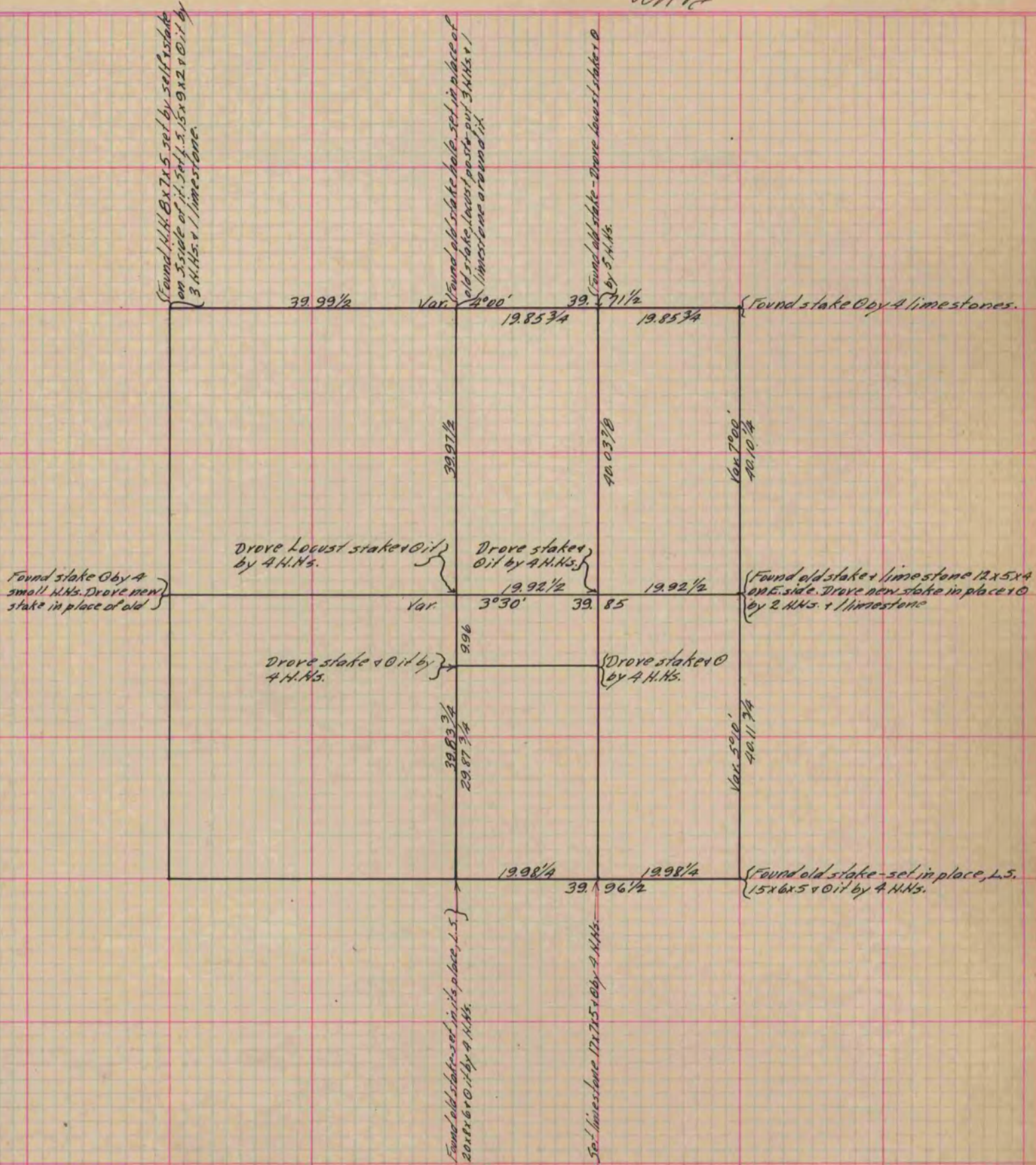
Rock County, Wisconsin, made Oct the 24 1887

I hereby certify that the following is a correct record of said survey as made by me.

COUNTY BUILDING
IN CITY OF BELOIT

(Signed) Edward Ruger

County Surveyor.



Copied from P. 336 Vol. 2 County Surveyor's Record.